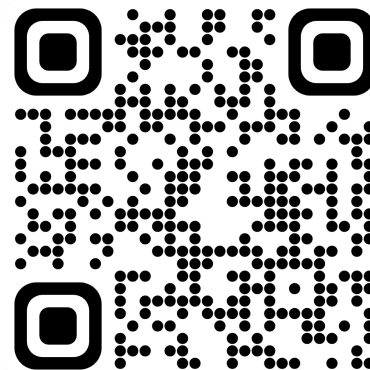


**Install guide for (2020-2023 Jeep Gladiator JT UAQ Uconnect 4C Navigation 8.4-Inch Display With Apple CarPlay & Android Auto Radio Upgrade)**

Before you begin, make sure to checkout our install video. We spend a good amount of time getting these videos just right so that they will be a helpful guide.

**Part lists**

- UAQ 8.4" Radio Upgrade (C-UAQ-JT)
- 8.4" Bezel (C-BEZ-84JL)

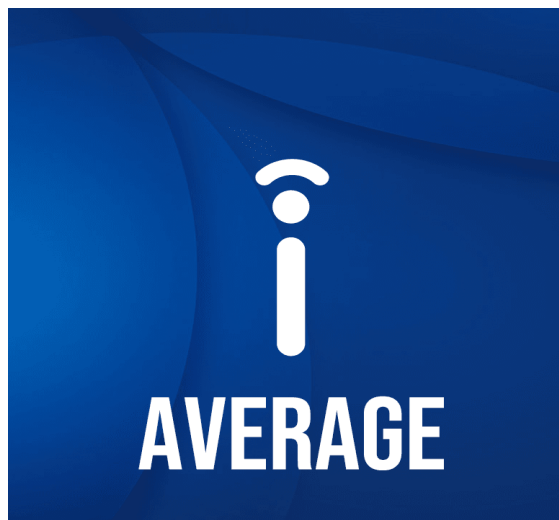


**Tools required for installation, socket sizes & whatnot.**

- Light Source
- Pry Tool
- Flathead Screwdriver
- 7mm Wrench/Socket

**Skill Level:** 2

**Time Investment:** 1-2 hours



**Step 1:** To Start, using your pry tool, pull the driver's side knee bolster down a bit in the top right corner. The knee bolster doesn't need to be fully removed, just enough space to get the HVAC controls popped out.



**Step 2:** Use your pry tool to pop out the HVAC controls from the right side. Either disconnect the connections then place it to the side or carefully let the controls hang while you finish installing the radio. The HVAC controls are only held in with retainer clips.



**Step 3:** There are two 7mm screws holding the factory bezel around the factory radio. Remove these two screws.



**Step 4:** You can now pull the factory bezel out and place it to the side. The rest of the bezel is only held in with retainer clips.



**Step 5:** You now have access to the four 7mm screws holding the factory radio in place. Remove all four screws.



**Step 6:** Lean the factory radio toward yourself, do not pull too hard. You'll see the factory fakra connections, USB connection, and the 52 black connector. Disconnect these connections. Place factory radio off to the side.



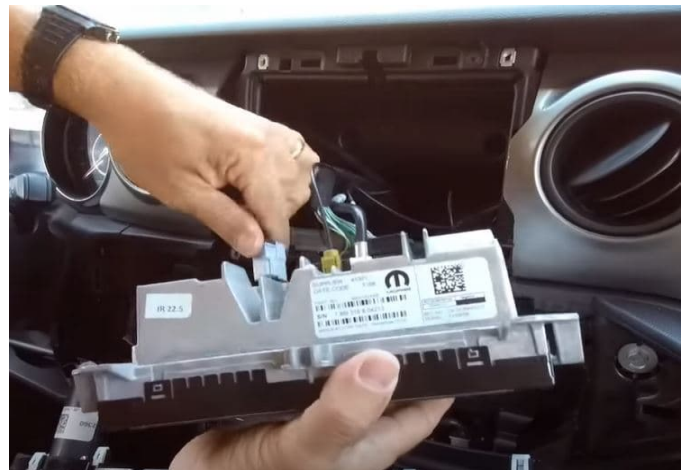
**Step 7:** For the UAQ, you will need an antenna for GPS and XM signal. You can either use a new antenna that does both signals or a splitter using an XM and a GPS antenna.

Note: GPS antennas can't have any metal above them to get signal.

Note: XM antennas work best in a high position.



**Step 8:** Time to install the UAQ. Connect the factory rear connections plus the new antenna for GPS/XM signal into the yellow/curry color fakra on the rear of the radio.



**Step 9:** Push radio into place, make sure not to pinch any wires. Secure radio with the four 7mm screws you removed earlier.





**Step 10:** Snap new bezel into place. This bezel has angled corners while your factory bezel has rounded corners. This is why you need a new bezel.



**Step 11:** Reinstall the two 7mm screws at the bottom of the new bezel.



**Step 12:** Snap the HVAC controls back into place. You'll hear the retainer clips engage.



**Step 13:** Push the top corner of the knee bolster back into place. You'll hear the retainer clips engage.



**Step 14:** Start the vehicle to see the new radio power on. If it doesn't double check your connections and your radio fuse, which is an inline fuse going from the battery to the firewall.

Note: When first installing an UConnect 4 or 5 radio in your Chrysler-based vehicle, you'll notice some features missing, such as your XM icon, incorrect splash screen, incorrect themes, heated & cooled seats and steering features, back up camera, no touch function, ghost touching on the screen, no AC, no sound unless you touch the screen and more. This will resolve itself, after turning off the vehicle, and letting it sleep an accumulative 48 hours. The backup camera may take the entire 48-hour period though. If there are any issues after that let us know.



**Step 16:** Thank you for your purchase.



## Return Policy/Warranty Terms

### **Infotainment.com 30-Day Return Policy:**

Infotainment.com offers hassle free returns within 30 days from the date-of-delivery for a full refund unless otherwise stated on the product advertisement (such as a custom or special order item). The customer may choose to cancel their order prior to shipping or fulfillment without penalty. If the customer's order or package sustained physical damage it must be reported to Infotainment.com within 7 days of arrival. A 15% restock fee will apply to all returns unless the returned item(s) have been deemed defective by Infotainment.com after full inspection, in this case a restocking fee will not be assessed.

To initiate a return, the customer is required to contact the customer service department by phone, live chat, or via the online ticket system at anytime within 30 days from the date-of-delivery. The representative will issue a Return Merchandise Authorization (RMA) number, which is required to process your return. A copy of a completed RMA form must be included with the return shipment to expedite the process. The return must be shipped within 7 days of the RMA issuance. Infotainment.com reserves the right to refuse any package returned to them without authorization or process could be delayed over 30 days.

Customers are responsible for all return shipping charges unless they receive the wrong product or a defective item. It is recommended that the customer utilizes signature confirmation and/or insurance when shipping an item to Infotainment.com.

Infotainment.com will not be responsible for lost or damaged packages. Only the signature of an Infotainment.com employee will suffice as proof of delivery. A pre-paid return shipping label may be requested by the customer (located within the continental U.S) at the cost of \$15.00 to be deducted from the total refund amount. Customers located outside the United States will be responsible for all incurred shipping charges and customs duty/tax fees to or from Infotainment.com.

Returns will be processed within ten (10) business days of receipt (not including weekends, holidays, and the day the package is delivered). Refunds will be issued back to the original form of payment. If the original form of payment is no longer valid the refund will be issued as store credit. Infotainment.com reserves the right to reject or impose additional charges for replacement of a return if there is damage, missing



DISCOVER YOUR VEHICLE'S POTENTIAL

components, excessive use/wear, a different serial number from when originally shipped, etc. If the customer's return has not been processed within 3 weeks of arrival the customer is advised to contact the customer service department for an update. This return policy is null & void if product(s) have been tampered with or modified. Infotainment.com is not responsible for professional fees related to installation, removal or re-installation of any product. Infotainment.com reserves the right to change or amend the return policy and procedures at any time without notification.

### **Infotainment.com Retail 90-Day Warranty Policy:**

Infotainment.com offers hassle free technical support and warranty claims on all products within 90 days from the date-of-delivery. Physical damage to an item received must be reported within 7 days of arrival.

To initiate a warranty claim, the customer is required to contact the customer service department by phone, live chat, or via the online ticket system at anytime within 90 days from the date-of-delivery. The representative will assist the customer with technical support and step-by-step troubleshooting procedures to resolve any issue or concern. If it is determined that the product(s) must be sent back for repair or exchange the representative will issue a Return Merchandise Authorization (RMA) number, which is required to process the warranty claim. A copy of a completed RMA form must be included with the return shipment to expedite the process. The item(s) must be shipped within 7 days of the RMA issuance. Infotainment.com reserves the right to refuse any package returned to them without authorization or process could be delayed over 30 days.

A pre-paid return shipping label will be issued by the customer service representative for customers located within the continental U.S. only. Customers located outside the U.S. will be responsible for all incurred shipping charges and customs duty/tax fees to or from Infotainment.com. Customers are fully responsible to ensure the item(s) are packaged securely to prevent damage in shipping transit. Infotainment.com will not be responsible for damaged item(s) due to poor packaging.

Warranty claims will be processed within five (5) business days of receipt (not including weekends, holidays, and the day the package is delivered). An Infotainment.com technician reserves the right to determine whether the troubled product requires a simple repair or a full replacement. Once the issue is resolved, a tracking number will be immediately provided to the customer when the repaired or replacement item is shipped





DISCOVER YOUR VEHICLE'S POTENTIAL

therefore ending the warranty claim. Infotainment.com reserves the right to reject or impose additional charges for warranty claims if there is damage, missing components, excessive use/wear, a different serial number from when originally shipped, etc. Infotainment.com will allow up to two (2) claims per order before it is determined the item(s) will not work in the customer's vehicle. If the customer's warranty claim has not been processed within 3 weeks of arrival the customer is advised to contact the customer service department for an update.

This warranty policy is null & void if product(s) have been tampered with or modified. Infotainment.com is not responsible for professional fees related to installation, removal or re-installation of any product. Infotainment.com reserves the right to change or amend the warranty policy and procedures at any time without notification.

**Infotainment.com Extended 1-Year Warranty Policy:**

Infotainment.com offers hassle free technical support and warranty claims on all products within 1 year from the date-of-delivery to retail customers who opt for the extended warranty coverage upon checkout. This policy also applies to all registered Infotainment.com wholesale accounts. Furthermore, franchise automobile dealers are granted additional coverage for their customers to match the vehicle's 3 year / 36,000 mile bumper-to-bumper manufacturer's warranty.

To initiate a warranty claim, the customer is required to contact the customer service department by phone, live chat, or via the online ticket system at anytime within 1 year from the date-of-delivery. The representative will assist the customer with technical support and step-by-step troubleshooting procedures to resolve any issue or concern. If it is determined that the product(s) must be sent back for repair or exchange the representative will issue a Return Merchandise Authorization (RMA) number, which is required to process the warranty claim. A copy of a completed RMA form must be included with the return shipment to expedite the process. The item(s) must be shipped within 7 days of the RMA issuance. Infotainment.com reserves the right to refuse any package returned to them without authorization or process could be delayed over 30 days.

A pre-paid return shipping label will be issued by the customer service representative for customers located within the continental U.S. only. Customers located outside the U.S. will be responsible for all incurred shipping charges and customs duty/tax fees to or from Infotainment.com. Customers are fully responsible to ensure the item(s) are



DISCOVER YOUR VEHICLE'S POTENTIAL

packaged securely to prevent damage in shipping transit. Infotainment.com will not be responsible for damaged item(s) due to poor packaging.

Warranty claims will be processed within five (5) business days of receipt (not including weekends, holidays, and the day the package is delivered). An Infotainment.com technician reserves the right to determine whether the troubled product requires a simple repair or a full replacement. Once the issue is resolved, a tracking number will be immediately provided to the customer when the repaired or replacement item is shipped therefore ending the warranty claim. Infotainment.com reserves the right to reject or impose additional charges for warranty claims if there is damage, missing components, excessive use/wear, a different serial number from when originally shipped, etc. Infotainment.com will allow up to two (2) claims per order before it is determined the item(s) will not work in the customer's vehicle. If the customer's warranty claim has not been processed within 3 weeks of arrival the customer is advised to contact the customer service department for an update.

This warranty policy is null & void if product(s) have been tampered with or modified. Infotainment.com is not responsible for professional fees related to installation, removal or re-installation of any product. Infotainment.com reserves the right to change or amend the warranty policy and procedures at any time without notification.