

**Install guide for (2024+ Ford Mustang - Sync 4 GPS Navigation)**

Before you begin, make sure to checkout our install video. We spend a good amount of time getting these videos just right so that they will be a helpful guide.

**Part lists**

- Sync 4 APIM Sync Module with GPS Navigation for 12-inch Display (F-S4ANAV-P)
- GPS Navigation Magnetic Antenna (F-GPSB)
- Sync 4 GPS Navigation Programmer (F-NAV-FD)



**Tools required for installation, socket sizes & whatnot.**

- Light Source
- Pry Tool
- Flathead Screwdriver
- T15 Torx Screwdriver
- 7mm, 8mm Wrench/Socket

**Skill Level:** 2

**Time Investment:** 2 hours



**Step 1:** First, we need to get behind the screen with our pry tool to remove the trim from behind the screen. Work your way down the trim to release all the retainer clips. Once removed, place off to the side.

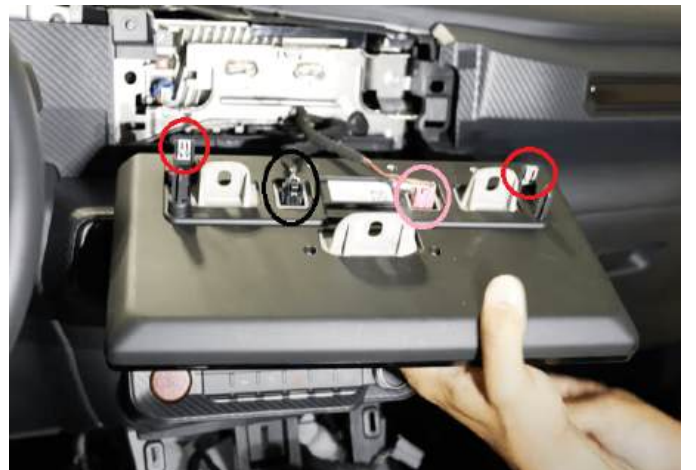


**Step 2:** There are three 8mm screws behind the screen. You'll need to remove all three.

Note: A magnet to fish the screws out and an angle drill is helpful with the low profile windshield.



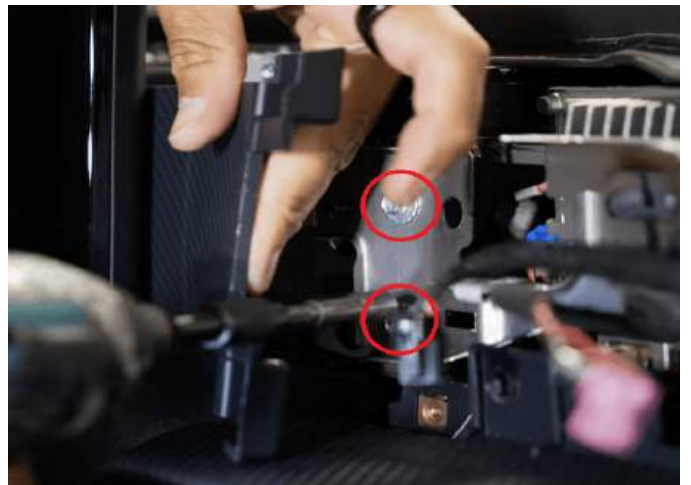
**Step 3:** You can now pull the screen from the dash; there are two retainer clips still holding it in place. Lean the screen forward and disconnect the two connections, the black and pink connectors.



**Step 4:** Next, remove the two 7mm screws.



**Step 5:** Once those two screws are out of the way, pull the trim back a bit to expose the two 7mm screws holding the bracket in front of the APIM. Remove both screws.



**Step 6:** There are two more 7mm screws to remove from the right side of the factory APIM



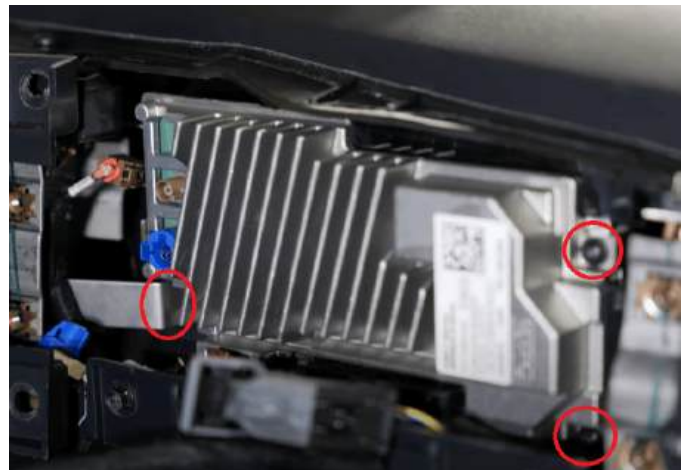
**Step 7:** Wiggle the bracket free from the dash, you don't need to disconnect the LVDS cable from the bracket. Lean the bracket forward so it's out of your way.



**Step 8:** Disconnect the fakra connections, USB connection and the lever connector on the APIM.



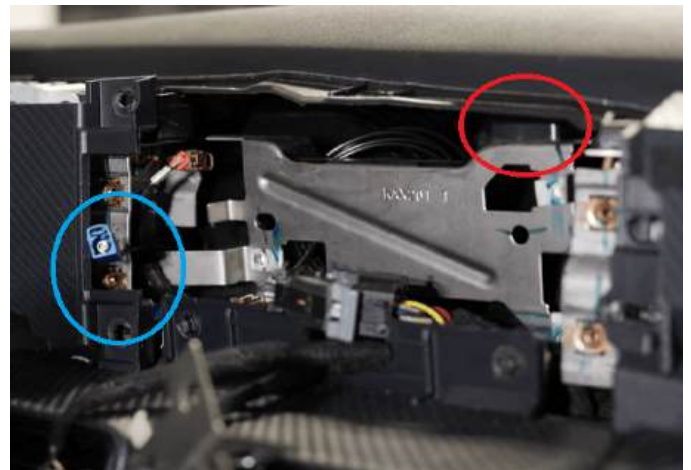
**Step 9:** Remove the three T15 screws from the APIM.



**Step 10:** With the screws removed, you can pull the old APIM out of the dash. Notice the new APIM has one new connector in the top left corner. This is for the GPS antenna for the built-in navigation.



**Step 11:** With the APIM out of the dash, time to install the GPS antenna. The antenna has a magnetic bottom that can stick to the APIM bracket. Feed the cable behind the APIM bracket and have the blue fakra come out in this location.



**Step 12:** Slide the new APIM in place then secure in place with the three T15 screws.



**Step 13:** Reconnect all the connections you removed earlier from the APIM plus the new GPS antenna blue fakra. Plug this into the new port on the top left of APIM.



**Step 14:** You can now reinstall the front bracket and secure it in place with the four 7mm screws.



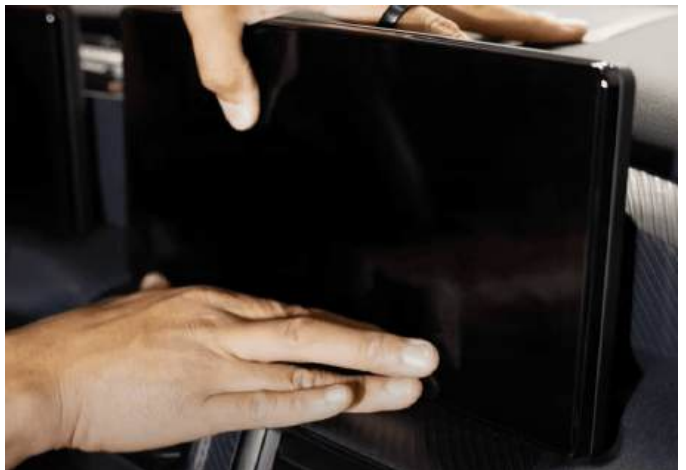
**Step 15:** Reinstall the two 7mm screws from the outer trim.



**Step 16:** Reinstall the screen connections.



**Step 17:** Reinstall the screen back into the dash. You'll hear the retainer clips snap into place.



**Step 18:** Reinstall the three 8mm screws to secure the screen in the dash.



**Step 19:** Snap back in the rear screen trim piece. You'll hear the retainer clips engage once it's in place.



**Step 20:** Use the genie to program the vehicle for the new upgrade.

I. Put vehicle into the run position.

II. Wait 1 minute after putting the vehicle into run to plug in the genie programmer.

III. The genie once plugged in will flash blue as it tries to program.

IV. The genie will turn a solid green light once programming was completed successfully, programming can take 1-3 minutes long.

V. Remove the genie and give the vehicle a sleep cycle.

VI. Test out your new upgrade.

VII. Enjoy!



**Step 21:** Now that programming is done. Start the vehicle, and you should see navigation on the unit. Tap the navigation screen to see it bigger.



**Step 22:** Enjoy your purchase and again thank you for choosing Infotainment.com for your upgrades.



## Return Policy/Warranty Terms

### **Infotainment.com 30-Day Return Policy:**

Infotainment.com offers hassle free returns within 30 days from the date-of-delivery for a full refund unless otherwise stated on the product advertisement (such as a custom or special order item). The customer may choose to cancel their order prior to shipping or fulfillment without penalty. If the customer's order or package sustained physical damage it must be reported to Infotainment.com within 7 days of arrival. A 15% restock fee will apply to all returns unless the returned item(s) have been deemed defective by Infotainment.com after full inspection, in this case a restocking fee will not be assessed.

To initiate a return, the customer is required to contact the customer service department by phone, live chat, or via the online ticket system at anytime within 30 days from the date-of-delivery. The representative will issue a Return Merchandise Authorization (RMA) number, which is required to process your return. A copy of a completed RMA form must be included with the return shipment to expedite the process. The return must be shipped within 7 days of the RMA issuance. Infotainment.com reserves the right to refuse any package returned to them without authorization or process could be delayed over 30 days.

Customers are responsible for all return shipping charges unless they receive the wrong product or a defective item. It is recommended that the customer utilizes signature confirmation and/or insurance when shipping an item to Infotainment.com.

Infotainment.com will not be responsible for lost or damaged packages. Only the signature of an Infotainment.com employee will suffice as proof of delivery. A pre-paid return shipping label may be requested by the customer (located within the continental U.S) at the cost of \$15.00 to be deducted from the total refund amount. Customers located outside the United States will be responsible for all incurred shipping charges and customs duty/tax fees to or from Infotainment.com.

Returns will be processed within ten (10) business days of receipt (not including weekends, holidays, and the day the package is delivered). Refunds will be issued back to the original form of payment. If the original form of payment is no longer valid the refund will be issued as store credit. Infotainment.com reserves the right to reject or impose additional charges for replacement of a return if there is damage, missing



DISCOVER YOUR VEHICLE'S POTENTIAL

components, excessive use/wear, a different serial number from when originally shipped, etc. If the customer's return has not been processed within 3 weeks of arrival the customer is advised to contact the customer service department for an update. This return policy is null & void if product(s) have been tampered with or modified. Infotainment.com is not responsible for professional fees related to installation, removal or re-installation of any product. Infotainment.com reserves the right to change or amend the return policy and procedures at any time without notification.

**Infotainment.com Retail 90-Day Warranty Policy:**

Infotainment.com offers hassle free technical support and warranty claims on all products within 90 days from the date-of-delivery. Physical damage to an item received must be reported within 7 days of arrival.

To initiate a warranty claim, the customer is required to contact the customer service department by phone, live chat, or via the online ticket system at anytime within 90 days from the date-of-delivery. The representative will assist the customer with technical support and step-by-step troubleshooting procedures to resolve any issue or concern. If it is determined that the product(s) must be sent back for repair or exchange the representative will issue a Return Merchandise Authorization (RMA) number, which is required to process the warranty claim. A copy of a completed RMA form must be included with the return shipment to expedite the process. The item(s) must be shipped within 7 days of the RMA issuance. Infotainment.com reserves the right to refuse any package returned to them without authorization or process could be delayed over 30 days.

A pre-paid return shipping label will be issued by the customer service representative for customers located within the continental U.S. only. Customers located outside the U.S. will be responsible for all incurred shipping charges and customs duty/tax fees to or from Infotainment.com. Customers are fully responsible to ensure the item(s) are packaged securely to prevent damage in shipping transit. Infotainment.com will not be responsible for damaged item(s) due to poor packaging.

Warranty claims will be processed within five (5) business days of receipt (not including weekends, holidays, and the day the package is delivered). An Infotainment.com technician reserves the right to determine whether the troubled product requires a simple repair or a full replacement. Once the issue is resolved, a tracking number will be immediately provided to the customer when the repaired or replacement item is shipped



DISCOVER YOUR VEHICLE'S POTENTIAL

therefore ending the warranty claim. Infotainment.com reserves the right to reject or impose additional charges for warranty claims if there is damage, missing components, excessive use/wear, a different serial number from when originally shipped, etc. Infotainment.com will allow up to two (2) claims per order before it is determined the item(s) will not work in the customer's vehicle. If the customer's warranty claim has not been processed within 3 weeks of arrival the customer is advised to contact the customer service department for an update.

This warranty policy is null & void if product(s) have been tampered with or modified. Infotainment.com is not responsible for professional fees related to installation, removal or re-installation of any product. Infotainment.com reserves the right to change or amend the warranty policy and procedures at any time without notification.

**Infotainment.com Extended 1-Year Warranty Policy:**

Infotainment.com offers hassle free technical support and warranty claims on all products within 1 year from the date-of-delivery to retail customers who opt for the extended warranty coverage upon checkout. This policy also applies to all registered Infotainment.com wholesale accounts. Furthermore, franchise automobile dealers are granted additional coverage for their customers to match the vehicle's 3 year / 36,000 mile bumper-to-bumper manufacturer's warranty.

To initiate a warranty claim, the customer is required to contact the customer service department by phone, live chat, or via the online ticket system at anytime within 1 year from the date-of-delivery. The representative will assist the customer with technical support and step-by-step troubleshooting procedures to resolve any issue or concern. If it is determined that the product(s) must be sent back for repair or exchange the representative will issue a Return Merchandise Authorization (RMA) number, which is required to process the warranty claim. A copy of a completed RMA form must be included with the return shipment to expedite the process. The item(s) must be shipped within 7 days of the RMA issuance. Infotainment.com reserves the right to refuse any package returned to them without authorization or process could be delayed over 30 days.

A pre-paid return shipping label will be issued by the customer service representative for customers located within the continental U.S. only. Customers located outside the U.S. will be responsible for all incurred shipping charges and customs duty/tax fees to or from Infotainment.com. Customers are fully responsible to ensure the item(s) are



DISCOVER YOUR VEHICLE'S POTENTIAL

packaged securely to prevent damage in shipping transit. Infotainment.com will not be responsible for damaged item(s) due to poor packaging.

Warranty claims will be processed within five (5) business days of receipt (not including weekends, holidays, and the day the package is delivered). An Infotainment.com technician reserves the right to determine whether the troubled product requires a simple repair or a full replacement. Once the issue is resolved, a tracking number will be immediately provided to the customer when the repaired or replacement item is shipped therefore ending the warranty claim. Infotainment.com reserves the right to reject or impose additional charges for warranty claims if there is damage, missing components, excessive use/wear, a different serial number from when originally shipped, etc. Infotainment.com will allow up to two (2) claims per order before it is determined the item(s) will not work in the customer's vehicle. If the customer's warranty claim has not been processed within 3 weeks of arrival the customer is advised to contact the customer service department for an update.

This warranty policy is null & void if product(s) have been tampered with or modified. Infotainment.com is not responsible for professional fees related to installation, removal or re-installation of any product. Infotainment.com reserves the right to change or amend the warranty policy and procedures at any time without notification.