

**Install guide for (2024+ Ford Mustang - Perimeter Plus Security System + Remote Start Installation)**

Before you begin, make sure to checkout our install video. We spend a good amount of time getting these videos just right so that they will be a helpful guide.

**Part lists**

- Ford Factory OEM Security Module
- Ford Factory OEM Security Harness
- Ford Factory Remote Start Bypass
- Instructions/Stickers



**Tools required for installation, socket sizes & whatnot.**

- Light Source
- Pry Tool
- Flathead Screwdriver
- 7mm Wrench/Socket

**Skill Level:** 2

**Time Investment:** 2 hours



**Step 1:** To start, open the armrest, then use your pry tool to pop the center trim up.



**Step 2:** Pull up on the shifter trim to pop it out. It is only held in with retainer clips.

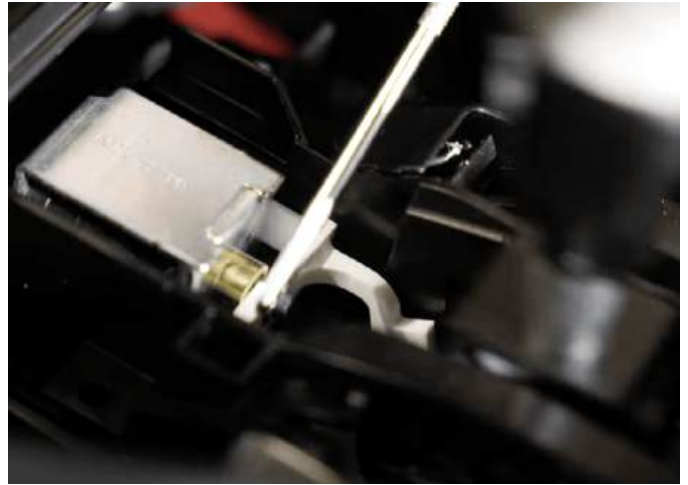


**Step 3:** Pull the shift boot up; it is only held in with retainer clips.



**Step 4:** You'll be able to see a small white tab that, if you push forward, will allow you to shift the gear shift handle without pushing on the brake.

Note: Apply your emergency brake before shifting the gear handle. You don't want the vehicle rolling away from you.



**Step 5:** Pull the trim panel from the sides of the center console. Do the same thing on the passenger side of the console.



**Step 6:** Remove the two 7mm screws from the driver and passenger side.



**Step 7:** You'll now be able to lift the center console up.



**Step 8:** Disconnect the one connections to the parking brake and cup holder LED lights.



**Step 9:** Remove the center cubby mat out of the way to expose two more screws.



**Step 10:** Remove the two exposed 7mm screws from the center console.



**Step 11:** Pull the tray out, then turn it around to disconnect the USB hub, 12volt outlet, and wireless charger if you have one installed.



**Step 12:** Next, we need to get behind the screen with our pry tool to remove the trim from behind the screen. Work your way down the trim to release all the retainer clips. Once removed, place off to the side.



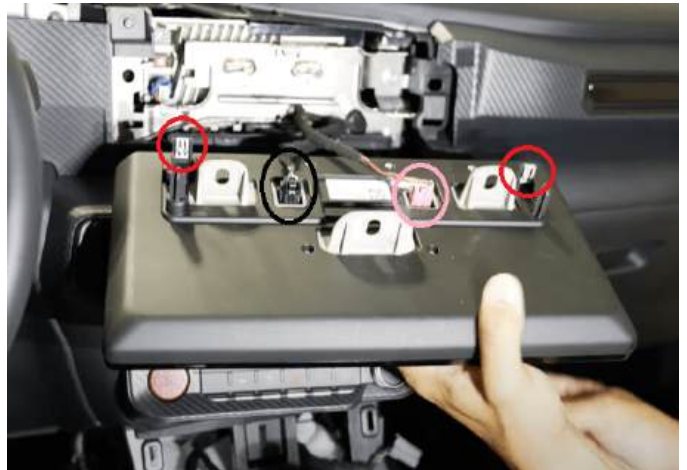
**Step 13:** There are three 8mm screws behind the screen. You'll need to remove all three.

Note: A magnet to fish the screws out and an angle drill is helpful with the low profile windshield.

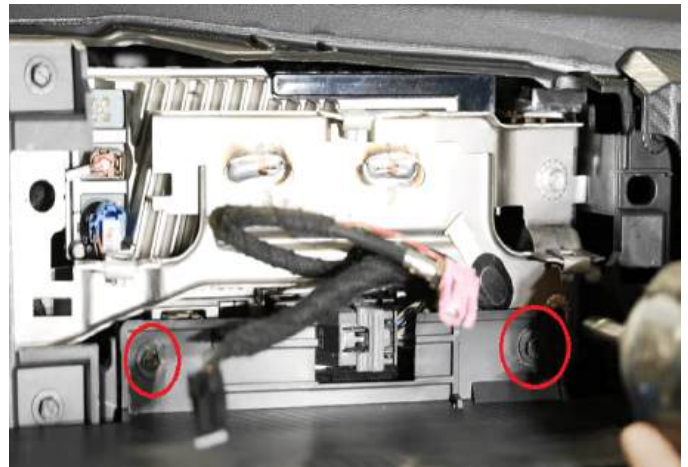
Note: If you have the larger OEM screen, you just need to remove three more screws to pull screen free.



**Step 14:** You can now pull the screen from the dash; there are two retainer clips still holding it in place. Lean the screen forward and disconnect the two connections, the black and pink connectors.



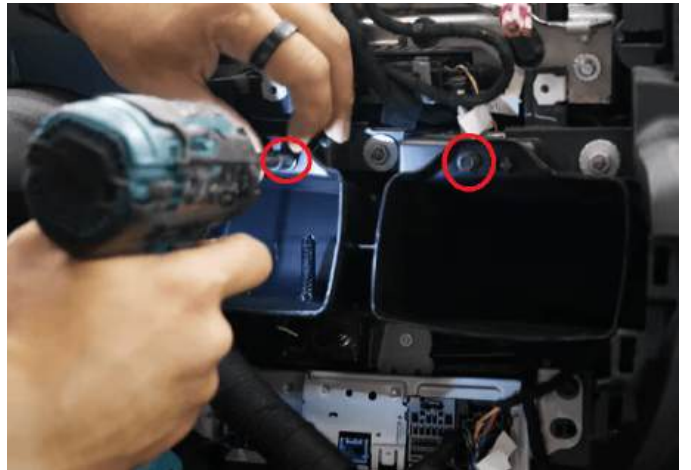
**Step 15:** Next, remove the two 7mm screws.



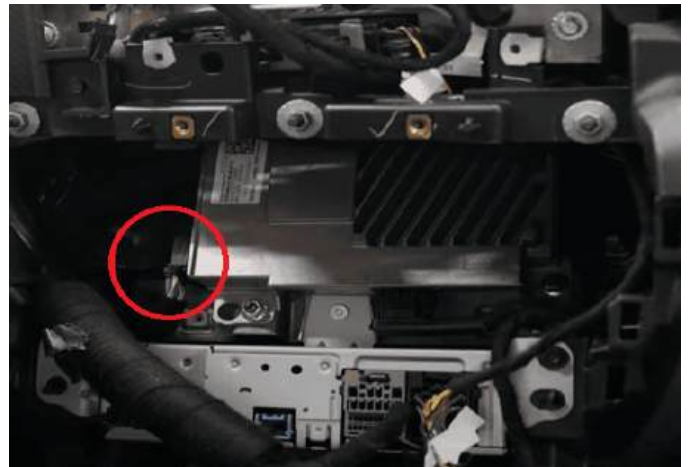
**Step 16:** Pop out the AC vent trim piece. You can either disconnect the connections or place the panel off to the side.



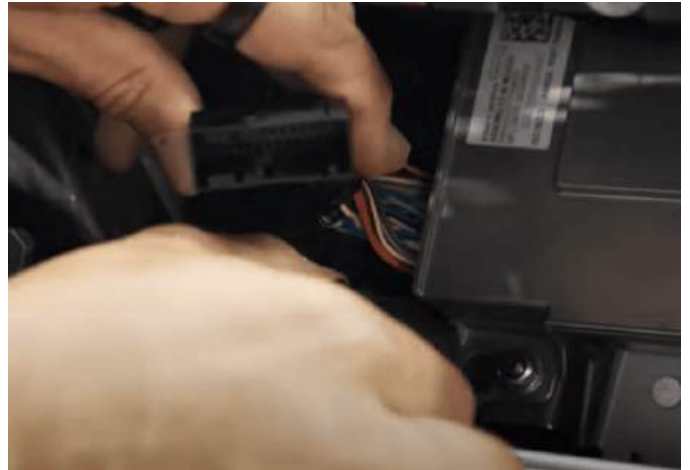
**Step 17:** Now remove the AC ducts, remove the two 7mm screws to free the AC ducts. You will need to angle the ducts up to free them from the dash.



**Step 18:** You'll now see the connection we are after. Push the locking tab down to free the connector.



**Step 19:** Take the Ford Factory OEM Security Harness and plug it into the location we just unplug the factory connector. Plug the factory harness into the Ford Factory OEM Security Harness other side.



**Step 20:** Push the harness into the dash and route the harness down. We want the small connector on the Ford Factory OEM Security Harness to go in the center dash right behind shifter.



**Step 21:** Keep routing till you get to this location behind the shifter.



**Step 22:** You can now reinstall your dash components.



**Step 23:** Next lets plug in the Ford Factory OEM Security Module.



**Step 24:** Now is the time to decide if you want to activate remote start from the alarm you are installing or to use your factory remote start. If you want to use your factory remote start, then don't install the little dongle. If you want to add the remote start, then install the little dongle.



**Step 25:** This is also the time to adjust the sensitivity of the alarm. Turn this dial clockwise to increase sensitivity and counter clockwise to decrease sensitivity.



**Step 26:** Now we need to power cycle the vehicle to acclimate the alarm. Hit the start to push button then again. You will hear the locks cycle. This only happens when the alarm is acclimating.

Note: Test the alarm from there and adjust the sensitivity to your liking.



**Step 27:** Reinstall the rest of the center dash.



**Step 28:** Enjoy your purchase and again thank you for choosing Infotainment.com for your upgrades.



## Return Policy/Warranty Terms

### **Infotainment.com 30-Day Return Policy:**

Infotainment.com offers hassle free returns within 30 days from the date-of-delivery for a full refund unless otherwise stated on the product advertisement (such as a custom or special order item). The customer may choose to cancel their order prior to shipping or fulfillment without penalty. If the customer's order or package sustained physical damage it must be reported to Infotainment.com within 7 days of arrival. A 15% restock fee will apply to all returns unless the returned item(s) have been deemed defective by Infotainment.com after full inspection, in this case a restocking fee will not be assessed.

To initiate a return, the customer is required to contact the customer service department by phone, live chat, or via the online ticket system at anytime within 30 days from the date-of-delivery. The representative will issue a Return Merchandise Authorization (RMA) number, which is required to process your return. A copy of a completed RMA form must be included with the return shipment to expedite the process. The return must be shipped within 7 days of the RMA issuance. Infotainment.com reserves the right to refuse any package returned to them without authorization or process could be delayed over 30 days.

Customers are responsible for all return shipping charges unless they receive the wrong product or a defective item. It is recommended that the customer utilizes signature confirmation and/or insurance when shipping an item to Infotainment.com.

Infotainment.com will not be responsible for lost or damaged packages. Only the signature of an Infotainment.com employee will suffice as proof of delivery. A pre-paid return shipping label may be requested by the customer (located within the continental U.S) at the cost of \$15.00 to be deducted from the total refund amount. Customers located outside the United States will be responsible for all incurred shipping charges and customs duty/tax fees to or from Infotainment.com.

Returns will be processed within ten (10) business days of receipt (not including weekends, holidays, and the day the package is delivered). Refunds will be issued back to the original form of payment. If the original form of payment is no longer valid the refund will be issued as store credit. Infotainment.com reserves the right to reject or impose additional charges for replacement of a return if there is damage, missing



DISCOVER YOUR VEHICLE'S POTENTIAL

components, excessive use/wear, a different serial number from when originally shipped, etc. If the customer's return has not been processed within 3 weeks of arrival the customer is advised to contact the customer service department for an update. This return policy is null & void if product(s) have been tampered with or modified. Infotainment.com is not responsible for professional fees related to installation, removal or re-installation of any product. Infotainment.com reserves the right to change or amend the return policy and procedures at any time without notification.

**Infotainment.com Retail 90-Day Warranty Policy:**

Infotainment.com offers hassle free technical support and warranty claims on all products within 90 days from the date-of-delivery. Physical damage to an item received must be reported within 7 days of arrival.

To initiate a warranty claim, the customer is required to contact the customer service department by phone, live chat, or via the online ticket system at anytime within 90 days from the date-of-delivery. The representative will assist the customer with technical support and step-by-step troubleshooting procedures to resolve any issue or concern. If it is determined that the product(s) must be sent back for repair or exchange the representative will issue a Return Merchandise Authorization (RMA) number, which is required to process the warranty claim. A copy of a completed RMA form must be included with the return shipment to expedite the process. The item(s) must be shipped within 7 days of the RMA issuance. Infotainment.com reserves the right to refuse any package returned to them without authorization or process could be delayed over 30 days.

A pre-paid return shipping label will be issued by the customer service representative for customers located within the continental U.S. only. Customers located outside the U.S. will be responsible for all incurred shipping charges and customs duty/tax fees to or from Infotainment.com. Customers are fully responsible to ensure the item(s) are packaged securely to prevent damage in shipping transit. Infotainment.com will not be responsible for damaged item(s) due to poor packaging.

Warranty claims will be processed within five (5) business days of receipt (not including weekends, holidays, and the day the package is delivered). An Infotainment.com technician reserves the right to determine whether the troubled product requires a simple repair or a full replacement. Once the issue is resolved, a tracking number will be immediately provided to the customer when the repaired or replacement item is shipped



DISCOVER YOUR VEHICLE'S POTENTIAL

therefore ending the warranty claim. Infotainment.com reserves the right to reject or impose additional charges for warranty claims if there is damage, missing components, excessive use/wear, a different serial number from when originally shipped, etc. Infotainment.com will allow up to two (2) claims per order before it is determined the item(s) will not work in the customer's vehicle. If the customer's warranty claim has not been processed within 3 weeks of arrival the customer is advised to contact the customer service department for an update.

This warranty policy is null & void if product(s) have been tampered with or modified. Infotainment.com is not responsible for professional fees related to installation, removal or re-installation of any product. Infotainment.com reserves the right to change or amend the warranty policy and procedures at any time without notification.

**Infotainment.com Extended 1-Year Warranty Policy:**

Infotainment.com offers hassle free technical support and warranty claims on all products within 1 year from the date-of-delivery to retail customers who opt for the extended warranty coverage upon checkout. This policy also applies to all registered Infotainment.com wholesale accounts. Furthermore, franchise automobile dealers are granted additional coverage for their customers to match the vehicle's 3 year / 36,000 mile bumper-to-bumper manufacturer's warranty.

To initiate a warranty claim, the customer is required to contact the customer service department by phone, live chat, or via the online ticket system at anytime within 1 year from the date-of-delivery. The representative will assist the customer with technical support and step-by-step troubleshooting procedures to resolve any issue or concern. If it is determined that the product(s) must be sent back for repair or exchange the representative will issue a Return Merchandise Authorization (RMA) number, which is required to process the warranty claim. A copy of a completed RMA form must be included with the return shipment to expedite the process. The item(s) must be shipped within 7 days of the RMA issuance. Infotainment.com reserves the right to refuse any package returned to them without authorization or process could be delayed over 30 days.

A pre-paid return shipping label will be issued by the customer service representative for customers located within the continental U.S. only. Customers located outside the U.S. will be responsible for all incurred shipping charges and customs duty/tax fees to or from Infotainment.com. Customers are fully responsible to ensure the item(s) are



DISCOVER YOUR VEHICLE'S POTENTIAL

packaged securely to prevent damage in shipping transit. Infotainment.com will not be responsible for damaged item(s) due to poor packaging.

Warranty claims will be processed within five (5) business days of receipt (not including weekends, holidays, and the day the package is delivered). An Infotainment.com technician reserves the right to determine whether the troubled product requires a simple repair or a full replacement. Once the issue is resolved, a tracking number will be immediately provided to the customer when the repaired or replacement item is shipped therefore ending the warranty claim. Infotainment.com reserves the right to reject or impose additional charges for warranty claims if there is damage, missing components, excessive use/wear, a different serial number from when originally shipped, etc. Infotainment.com will allow up to two (2) claims per order before it is determined the item(s) will not work in the customer's vehicle. If the customer's warranty claim has not been processed within 3 weeks of arrival the customer is advised to contact the customer service department for an update.

This warranty policy is null & void if product(s) have been tampered with or modified. Infotainment.com is not responsible for professional fees related to installation, removal or re-installation of any product. Infotainment.com reserves the right to change or amend the warranty policy and procedures at any time without notification.