

**Install guide for (2021-2023 Ford F-150 12 Full Digital Speedometer Cluster Upgrade)**

Before you begin, make sure to checkout our install video. We spend a good amount of time getting these videos just right so that they will be a helpful guide.

**Part lists**

- 12" Full Digital Speedometer EVIC Instrument Panel Cluster
- Instrument Panel Bezel for Full Digital Speedometer Cluster
- Dash Panel Top Black - Left Driver Side
- Dash Panel Top Black - Right Passenger Side

**Tools required for installation, socket sizes & whatnot.**

- Light Source
- Pry Tool
- Panel Tool
- Flathead Screwdriver
- T20, T25 Torx Screwdriver
- 7mm, 10mm Wrench/Socket, with extension
- Right Angle Wrench or 7mm ratcheting Wrench with Swivel or Angled Head.
- Impact Drill
- Angle Driver



**Skill Level:** 4

**Time Investment:** 3-4 hours



**Step 1:** Start by removing the trim panel from above the radio screen. Use your pry tool as it is only held in with retainer clips. Place it off to the side.



**Step 2:** Next is to remove the trim panel from below the screen. Start by the key cylinder. Use your pry tool as it is only held in with retainer clips. Place it off to the side.



**Step 3:** Pull below the key cylinder to pop out two retainer clips to expose two 7mm bolts that need to be removed. You do not need to remove the knee bolster fully.



**Step 4:** You'll see the two 7mm bolts to remove. Remove them and place off to the side.



**Step 5:** Remove the trim panel below the driver's AC vent. Use your pry tool as it is only held in with retainer clips. Place it off to the side.



**Step 6:** Remove the one 7mm bolt from behind the trim panel you just removed.



**Step 7:** Lower and extend the steering wheel to get access to the column cover. Pull up to release the retainer clips.



**Step 8:** Using your pry tool, remove the trim from around the factory cluster.



**Step 9:** Disconnect the three connections going to the key cylinder and place the cluster bezel off to the side.



**Step 10:** You are now clear to remove the factory cluster. There are four 7mm screws holding the factory cluster in place. Remove all four and remove cluster by angling the top toward you. Disconnect the one wire connection to the cluster and place it off to the side.



**Step 11:** Now the real fun begins. If you haven't already, disconnect your battery as we will be working with the passenger airbag. Once that is done, we need to remove the passenger pillar. Start by removing the cap with a pry tool.



**Step 12:** You can now remove the two 10mm bolts.



**Step 13:** You can now grab the handle of the pillar to pull it inward and upward.

Note: If you have tweeters in the pillars, remember to disconnect the tweeter while removing the passenger side pillar.



**Step 14:** Remove the 7mm bolt below the passenger side AC vent then pull the AC vent out as it is only held in with retainer clips.



**Step 15:** Remove the side trim panel. You'll see the green retainer clips once the AC vent was removed.



**Step 16:** Next open the arm rest to get better access to the trim panel. Using your pry tool, pull the trim out then back to remove trim.



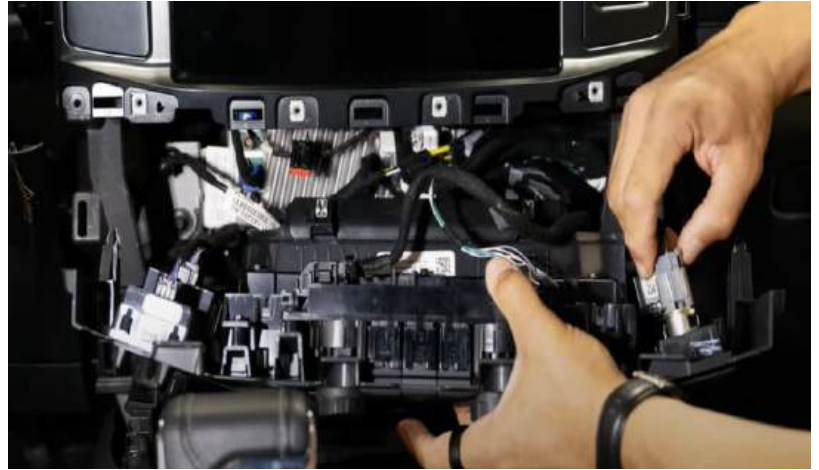
**Step 17:** You can remove trim from the driver's side of the center console.



**Step 18:** Remove the six 7mm bolts from above climate controls. Only four bolts (red) need to be removed climate controls. The other two 7mm bolts (green) need to also be removed to take the radio out.



**Step 19:** Turn climate control face down so you can remove the connections from its rear. Place climate controls off to the side once removed.



**Step 20:** Remove the three 7mm bolts from around the radio.

Note: That isn't all the 7mm bolts to remove, there are two hidden 7mm bolts.



**Step 21:** Next remove the rubber mat from above the radio screen to expose the two 7mm bolts needed to be removed to get to the two 7mm hidden bolts.

Note: This is when the angle driver comes in handy.

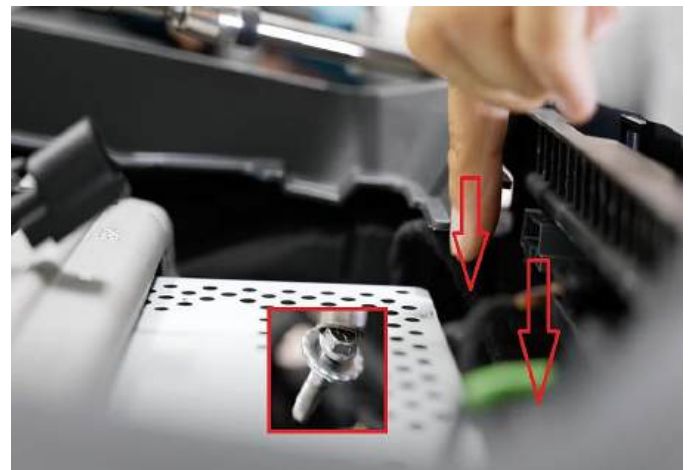


**Step 22:** Pull up on the trim to get it to release as it is only held in with retainer clips and one wired connection.



**Step 23:** You can now see the two hidden 7mm bolts down behind the radio screen.

Note: The 7mm bolts are silver. You'll need to use your extender and a magnetic tip not to lose the bolt in the dash.



**Step 24:** You can now pull the screen out. Lean the screen forward so you can get to the rear of the screen to disconnect it. Carefully place the screen to the side.



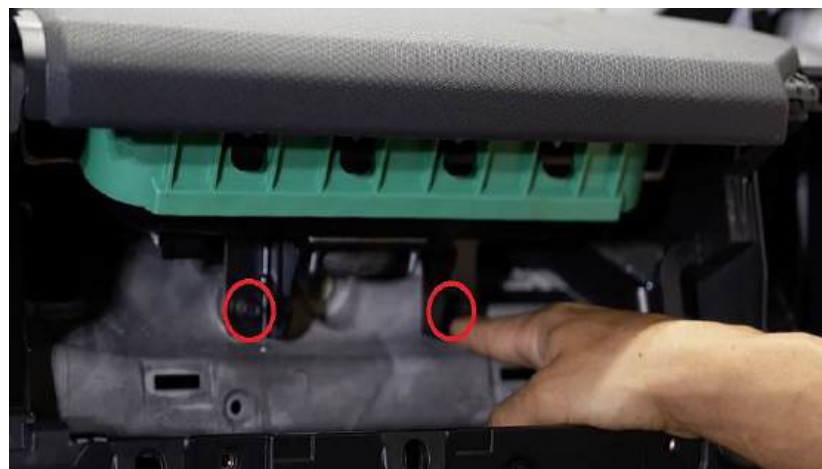
**Step 25:** Next is to remove the upper glove box. Open the glove box and remove the three T25 Torx screws.



**Step 26:** Pull the glove box straight back as there are still some retainer clips holding it in place. Once removed place off to the side.



**Step 27:** Remove the two 10mm bolts holding the lower end of the air bag in place.



**Step 28:** Under the edge of the top liner there are three T20 Torx screws.

Note: Angle Driver is handy on this step.



**Step 29:** Going over to the driver's side. Time to remove the driver's side pillar. Remove the cover with your pry tool.



**Step 30:** Remove the two 10mm bolts.



**Step 31:** Pull the driver's pillar toward you then up to release. Place it off to the side.

Note: If you have tweeters in the pillars, remember to disconnect the tweeter while removing the passenger side pillar.



**Step 32:** Remove the trim panel from the driver's side with pry tool. It is only held in with retainer clips.



**Step 33:** You can now see the last T20 Torx screw. Remove it.



**Step 34:** Remove the two 7mm bolts below the driver's AC vent.



**Step 35:** The driver's AC vent can now be pulled out. It is only held in with retainer clips.



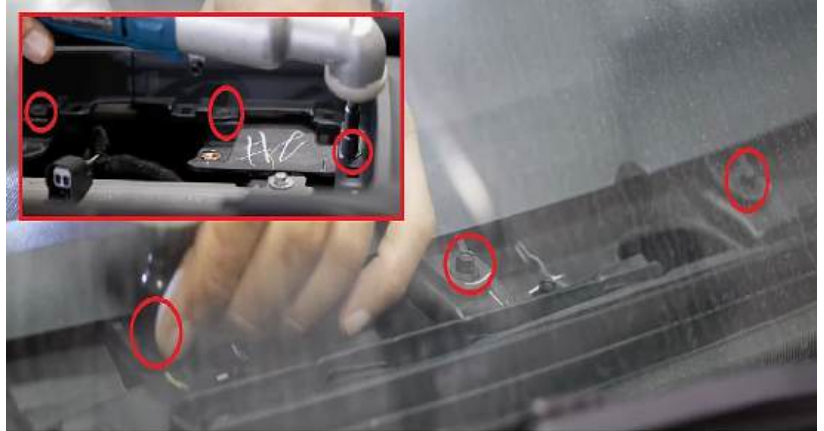
**Step 36:** Remove the dash shroud that is up against the front windshield. It is only held in with retainer clips. Use your pry tool to lift on the left or right side to start releasing the retainer clips. Place it off to the side.



**Step 37:** After the shroud is removed, you'll see the eleven 7mm bolts holding the top dash in place. Remove all eleven.

Note: There are one 7mm bolt per side, five along the glass, and four in the center tray area.

Note: The angle driver is very handy for this part.



**Step 38:** Starting on the passenger side, Use your pry tool to lift on the clip to release, the rest of the passenger dash is held in with retainer clips. Firmly lift to release retainer clips. Lift to see the yellow airbag connection.

Note: IMPORTANT, make sure to disconnect battery before disconnecting airbag.



**Step 39:** You'll see the Yellow airbag connection. Push down the locking tab to release connection.

Note: New dash will not come with airbag. You will need to swap the airbag over to the new dash.



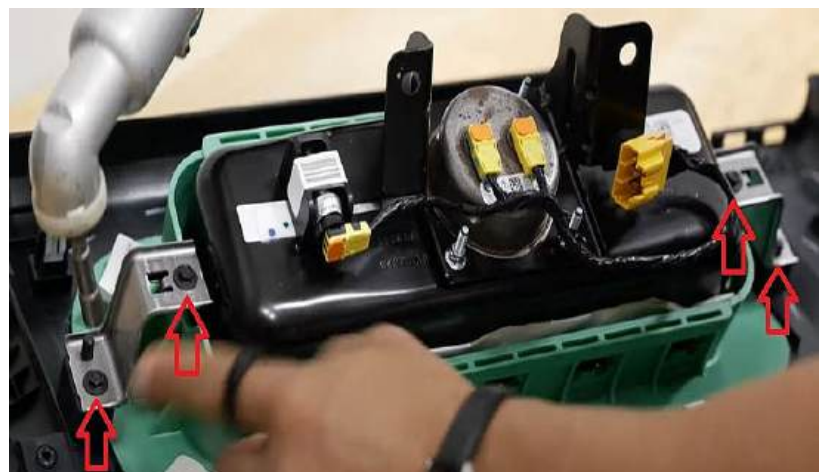
**Step 40:** On driver's side. Do the same to release the dash. Release the clip with pry tool then firmly lift to release retainer clips. Disconnect the Sun sensor.



**Step 41:** Move the Sun sensor to the new driver's dash. The sun sensor is only held in with clips, squeeze to release then snap sun sensor in new driver's dash.



**Step 42:** Let's move the Airbag over to the new passenger side dash. First remove the four 7mm bolts on the sides of the airbag.



**Step 43:** The airbag is still held in with plastic clips. Using a pry tool or flathead screw driver, you can pry the four plastic hooks from one side to release the airbag. You'll need to install airbag in the same direction in the new passenger side dash.



**Step 44:** Install airbag in the new passenger side dash. It is the same process in reverse.



**Step 45:** Time to swap over key cylinder over to new cluster housing.



**Step 46:** There are three T20 Torx screws holding the key cylinder in place. Remove all three and swap the key cylinder over to new cluster housing.

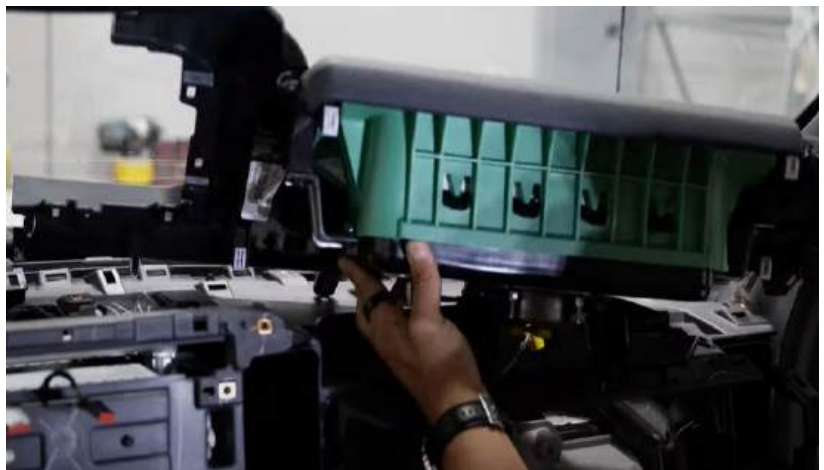


**Step 47:** Time for installation of the new driver's side dash.

Note: Make sure to plug in Sun sensor.



**Step 48:** Install the new passenger side dash with the airbag you transferred over.



**Step 49:** Reinstall the eleven 7mm screws into place.



**Step 50:** Install the long shroud close to the windshield.



**Step 51:** Reinstall the driver's and passenger side pillars with the two 10mm bolts per side.

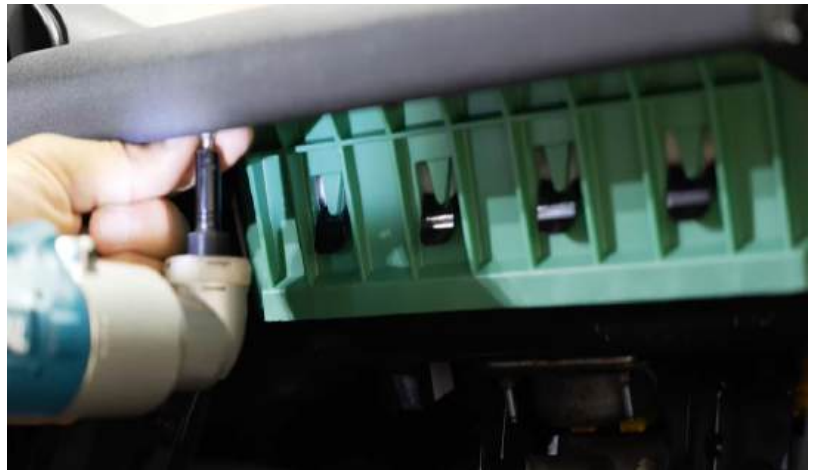
Note: Remember to reconnect your tweeters if you have them.



**Step 52:** Reinstall the two 10mm bolts holding the bottom of the airbag in place.



**Step 53:** Reinstall the three T20 Torx screws under the passenger side dash lip.



**Step 54:** Reinstall the glove box the secure with the three T25 Torx screws.

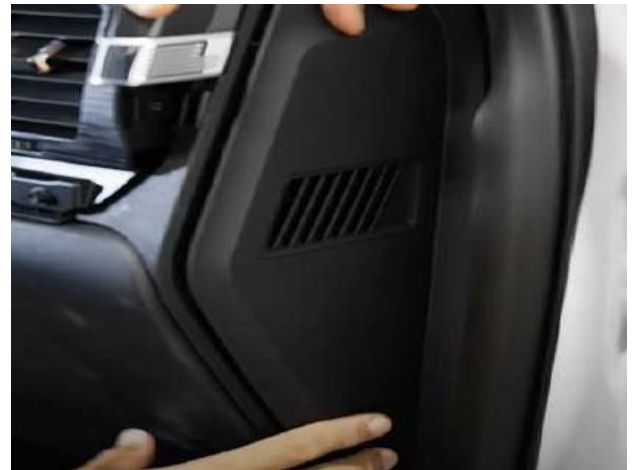


**Step 55:** Reinstall the passenger side AC vent and secure with the 7mm bolt.



**Step 56:** Reinstall passenger side trim panel. It just snaps into place.

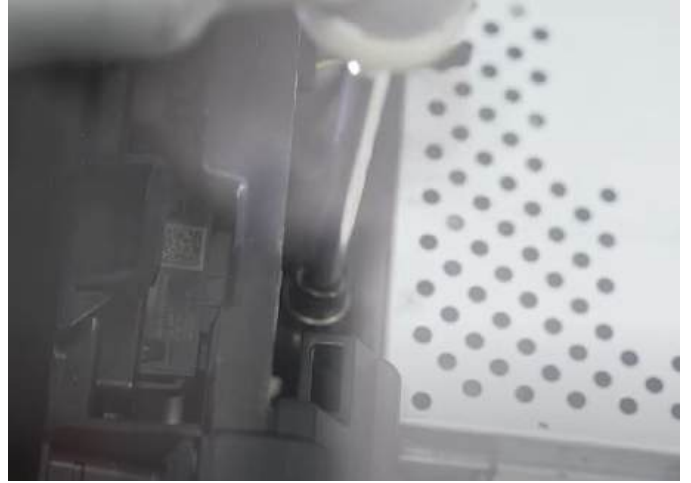
Note: You may need to pull out the weather stripping to install correctly, after which you put the weather stripping back into place.



**Step 57:** Time to install the screen. Reconnect the screen connection and snap the screen back into place.



**Step 58:** Reinstall the two hidden 7mm bolts down behind the radio screen.



**Step 59:** Reinstall the center console cover. Remember to reconnect the one connection under it. Secure into place with the two 7mm bolts.



**Step 60:** Put the rubber mat back into place.

Note: You can reconnect the battery at this point.



**Step 61:** Time to install the new and beautiful new digital cluster. There is only one connection on its rear.

Note: Once the cluster is plugged in you'll see it light up.



**Step 62:** Secure the new cluster into the dash with the four 7mm screws.



**Step 63:** Reinstall the three 7mm bolts from around the screen.



**Step 64:** Reinstall the driver's side AC vent, secure in place with the two 7mm bolts.



**Step 65:** Next is the cluster bezel, reconnect the key cylinder connections.



**Step 66:** Install the new cluster bezel around the new full digital cluster. You'll hear the retainer clips snap into place.



**Step 67:** Reinstall the two 7mm bolts behind the upper right side of the knee bolster.



**Step 68:** Reinstall the one 7mm bolt to the right of the driver's AC vent.



**Step 69:** Reinstall driver's AC vent trim.



**Step 70:** Reinstall the one 7mm bolt behind the driver's side trim panel.



**Step 71:** Reinstall the driver's side trim panel.

Note: You may need to pull out the weather stripping to install correctly, after which you put the weather stripping back into place.



**Step 72:** Reinstall the steering wheel column cover. There are clips along the top and sides.



**Step 73:** Reinstall the climate controls. Start by reconnecting everything you disconnected from the rear of the climate controls.



**Step 74:** Side notes with helpful details, maybe an inside joke.



**Step 75:** Reinstall the side trim panels along the center console. Remember to slide the trim forward then inward.



**Step 76:** Reinstall the long trim panel from the key cylinder to under the glove box. You'll hear the retainer clips snap into place.



**Step 77:** Lastly reinstall the last trim panel that goes above the radio screen. You'll hear the retainer clips snap into place.



**Step 78:** Turn the vehicle on. The cluster should light up and be working as its pre-programmed for your vehicle.



**Step 79:** Enjoy the big beautiful full digital cluster! Thank you!

## Things To Know

- Our clusters are pre-programmed for a 100% plug & play installation. Please be sure to fill out our FORD TRUCK CLUSTER FORM after you order to expedite the programming process. Please allow 3-4 days for processing as each order is considered custom.
- This 12" cluster is specifically designed for standard Ford F-150s. It is not compatible with Tremors and other specialty models.
- Clusters may show very minor wear & tear. We do not sell clusters with deep scratches, cracks, or other heavy physical damage.
- If your shipping address reflects a Canadian address, we will prepare and send a KPH cluster programmed for your country.

## Return Policy/Warranty Terms

### **Infotainment.com 30-Day Return Policy:**

Infotainment.com offers hassle free returns within 30 days from the date-of-delivery for a full refund unless otherwise stated on the product advertisement (such as a custom or special order item). The customer may choose to cancel their order prior to shipping or fulfillment without penalty. If the customer's order or package sustained physical damage it must be reported to Infotainment.com within 7 days of arrival. A 15% restock fee will apply to all returns unless the returned item(s) have been deemed defective by Infotainment.com after full inspection, in this case a restocking fee will not be assessed.

To initiate a return, the customer is required to contact the customer service department by phone, live chat, or via the online ticket system at anytime within 30 days from the date-of-delivery. The representative will issue a Return Merchandise Authorization (RMA) number, which is required to process your return. A copy of a completed RMA form must be included with the return shipment to expedite the process. The return must be shipped within 7 days of the RMA issuance. Infotainment.com reserves the right to refuse any package returned to them without authorization or process could be delayed over 30 days.

Customers are responsible for all return shipping charges unless they receive the wrong product or a defective item. It is recommended that the customer utilizes signature confirmation and/or insurance when shipping an item to Infotainment.com.

Infotainment.com will not be responsible for lost or damaged packages. Only the signature of an Infotainment.com employee will suffice as proof of delivery. A pre-paid return shipping label may be requested by the customer (located within the continental U.S) at the cost of \$15.00 to be deducted from the total refund amount. Customers located outside the United States will be responsible for all incurred shipping charges and customs duty/tax fees to or from Infotainment.com.

Returns will be processed within ten (10) business days of receipt (not including weekends, holidays, and the day the package is delivered). Refunds will be issued back to the original form of payment. If the original form of payment is no longer valid the refund will be issued as store credit. Infotainment.com reserves the right to reject or impose additional charges for replacement of a return if there is damage, missing



DISCOVER YOUR VEHICLE'S POTENTIAL

components, excessive use/wear, a different serial number from when originally shipped, etc. If the customer's return has not been processed within 3 weeks of arrival the customer is advised to contact the customer service department for an update. This return policy is null & void if product(s) have been tampered with or modified. Infotainment.com is not responsible for professional fees related to installation, removal or re-installation of any product. Infotainment.com reserves the right to change or amend the return policy and procedures at any time without notification.

**Infotainment.com Retail 90-Day Warranty Policy:**

Infotainment.com offers hassle free technical support and warranty claims on all products within 90 days from the date-of-delivery. Physical damage to an item received must be reported within 7 days of arrival.

To initiate a warranty claim, the customer is required to contact the customer service department by phone, live chat, or via the online ticket system at anytime within 90 days from the date-of-delivery. The representative will assist the customer with technical support and step-by-step troubleshooting procedures to resolve any issue or concern. If it is determined that the product(s) must be sent back for repair or exchange the representative will issue a Return Merchandise Authorization (RMA) number, which is required to process the warranty claim. A copy of a completed RMA form must be included with the return shipment to expedite the process. The item(s) must be shipped within 7 days of the RMA issuance. Infotainment.com reserves the right to refuse any package returned to them without authorization or process could be delayed over 30 days.

A pre-paid return shipping label will be issued by the customer service representative for customers located within the continental U.S. only. Customers located outside the U.S. will be responsible for all incurred shipping charges and customs duty/tax fees to or from Infotainment.com. Customers are fully responsible to ensure the item(s) are packaged securely to prevent damage in shipping transit. Infotainment.com will not be responsible for damaged item(s) due to poor packaging.

Warranty claims will be processed within five (5) business days of receipt (not including weekends, holidays, and the day the package is delivered). An Infotainment.com technician reserves the right to determine whether the troubled product requires a simple repair or a full replacement. Once the issue is resolved, a tracking number will be immediately provided to the customer when the repaired or replacement item is shipped



DISCOVER YOUR VEHICLE'S POTENTIAL

therefore ending the warranty claim. Infotainment.com reserves the right to reject or impose additional charges for warranty claims if there is damage, missing components, excessive use/wear, a different serial number from when originally shipped, etc. Infotainment.com will allow up to two (2) claims per order before it is determined the item(s) will not work in the customer's vehicle. If the customer's warranty claim has not been processed within 3 weeks of arrival the customer is advised to contact the customer service department for an update.

This warranty policy is null & void if product(s) have been tampered with or modified. Infotainment.com is not responsible for professional fees related to installation, removal or re-installation of any product. Infotainment.com reserves the right to change or amend the warranty policy and procedures at any time without notification.

**Infotainment.com Extended 1-Year Warranty Policy:**

Infotainment.com offers hassle free technical support and warranty claims on all products within 1 year from the date-of-delivery to retail customers who opt for the extended warranty coverage upon checkout. This policy also applies to all registered Infotainment.com wholesale accounts. Furthermore, franchise automobile dealers are granted additional coverage for their customers to match the vehicle's 3 year / 36,000 mile bumper-to-bumper manufacturer's warranty.

To initiate a warranty claim, the customer is required to contact the customer service department by phone, live chat, or via the online ticket system at anytime within 1 year from the date-of-delivery. The representative will assist the customer with technical support and step-by-step troubleshooting procedures to resolve any issue or concern. If it is determined that the product(s) must be sent back for repair or exchange the representative will issue a Return Merchandise Authorization (RMA) number, which is required to process the warranty claim. A copy of a completed RMA form must be included with the return shipment to expedite the process. The item(s) must be shipped within 7 days of the RMA issuance. Infotainment.com reserves the right to refuse any package returned to them without authorization or process could be delayed over 30 days.

A pre-paid return shipping label will be issued by the customer service representative for customers located within the continental U.S. only. Customers located outside the U.S. will be responsible for all incurred shipping charges and customs duty/tax fees to or from Infotainment.com. Customers are fully responsible to ensure the item(s) are



DISCOVER YOUR VEHICLE'S POTENTIAL

packaged securely to prevent damage in shipping transit. Infotainment.com will not be responsible for damaged item(s) due to poor packaging.

Warranty claims will be processed within five (5) business days of receipt (not including weekends, holidays, and the day the package is delivered). An Infotainment.com technician reserves the right to determine whether the troubled product requires a simple repair or a full replacement. Once the issue is resolved, a tracking number will be immediately provided to the customer when the repaired or replacement item is shipped therefore ending the warranty claim. Infotainment.com reserves the right to reject or impose additional charges for warranty claims if there is damage, missing components, excessive use/wear, a different serial number from when originally shipped, etc. Infotainment.com will allow up to two (2) claims per order before it is determined the item(s) will not work in the customer's vehicle. If the customer's warranty claim has not been processed within 3 weeks of arrival the customer is advised to contact the customer service department for an update.

This warranty policy is null & void if product(s) have been tampered with or modified. Infotainment.com is not responsible for professional fees related to installation, removal or re-installation of any product. Infotainment.com reserves the right to change or amend the warranty policy and procedures at any time without notification.