

Install guide for (2019-2024 Ram 1500 & Heavy Duty Factory OEM ParkSense Rear Park Assist)

Before you begin, make sure to checkout our install video. We spend a good amount of time getting these videos just right so that they will be a helpful guide.

Part lists

- Drive/Passenger side valance.
- Rear Park Assist Sensor Harness (C-INTPKAC2-DT)
- Rear Park Assist Power Harness (C-INTPKAC1-DT)
- Four Park Assist Sensors
- Four Park Assist Sensor Stickers
- Rear Park Assist Module
- Clips
- Genie Programmer
- Security Gateway Module Bypass

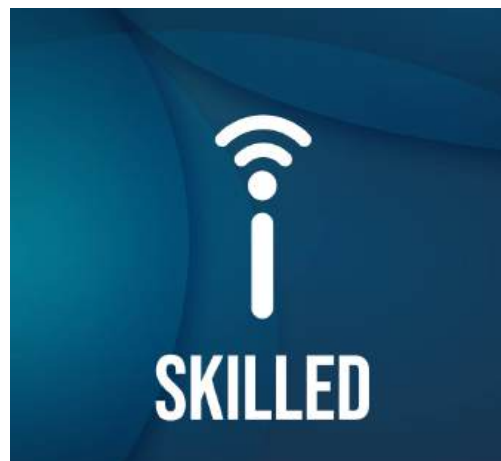


Tools required for installation, socket sizes & whatnot.

- 8mm Wrench/Socket
- 7mm Wrench/Socket
- 10mm Wrench/Socket
- 15mm Wrench/Socket

Skill Level: 3

Time Investment: 2 hours



Step 1: Remove the factory valance from the driver & passenger side of the rear bumper.

There are 9 nuts & 3 plastic clips holding the factory valance in place.



Step 2: Install the new driver and passenger side valances on the rear bumper.

Note: The clips will hold it in place while you tighten down the 9 nuts.



Step 3: Take the provided C-INTPKAC2-DT & route the harness above the bumper and plug in the two sensors per side of the vehicle.

Note: There are plastic clips on the harness that clip into the bumper.



Step 4: Zip tie any excess wiring on to the factory harnesses.

Note: Zip tie close to the frame of the vehicle.



Step 5: Run the new wiring harness from the rear bumper to the front driver side wheel well.



Step 6: Zip tie the harness to the factory harness.



Step 7: Run the harness along the top of the frame along the driver's side of the vehicle.

Note: Zip tie along the way to secure harness in place.

Note: Do NOT zip tie to your Parking Brake line. It is a steel cable. Avoid it.



Step 8: Once you reach the driver's side wheel well. Remove the plastic wheel well by removing the eight 8mm bolts, one 10mm bolt & two plastic clips.



Step 9: With the wheel well cover out of the way. You can route the harness up toward the firewall.



Step 10: There is a small cover that can be removed from inside the vehicle by removing the two 15mm nuts. Once removed, you can drill a hole through this cover giving yourself a spot to route the harness into the cab of the vehicle.



Step 11: Route the harness into the cab through the drilled hole or any other way you decide to route the harness into the cab of the vehicle.

Note: Remember to use some silicone paste to fill the drilled hole to make it waterproof.



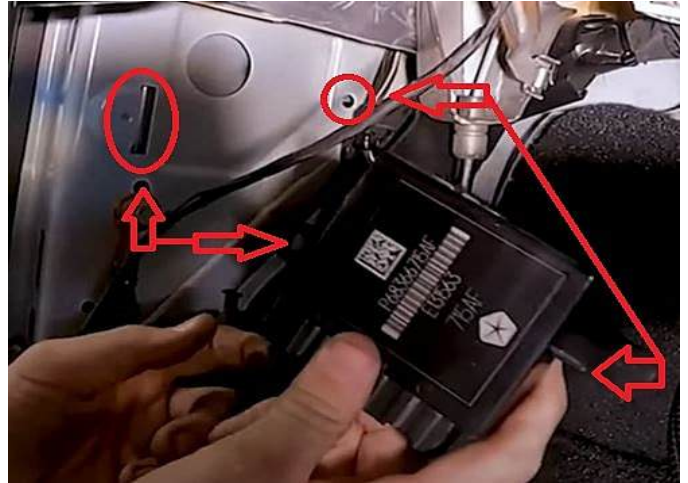
Step 12: Remove driver's left side foot panel.

Note: The panel is only held in with retainer clips.



Step 13: Mount the new Rear Park Assist Module.

Note: The left side tab of the Rear Park Assist Module slides into place and the right side is held in with a plastic clip.



Step 14: Once the Rear Park Assist Module is mounted, plug in the harness you ran to the cab of the vehicle into the middle slot of the Rear Park Assist Module.



Step 15: To install the Rear Park Assist Power Harness (C-INTPKAC1-DT) you'll need to remove your radio/bezel. Starting with removing the tray cover on top of the dash and removing the two 7mm bolts.



Step 16: Once the two 7mm bolts are removed the rest of the radio/bezel is held into place with retainer clips.



Step 17: Pull the radio/bezel forward so you get access to the 12v cigarette lighter.



Step 18: Connect the Rear Park Assist Power Harness to the 12v cigarette lighter.



Step 19: Route the Rear Park Assist Power Harness behind the radio & down to the driver's foot well.



Step 20: Pull the harness down into the driver's foot well and route to the left side of the driver's foot well.

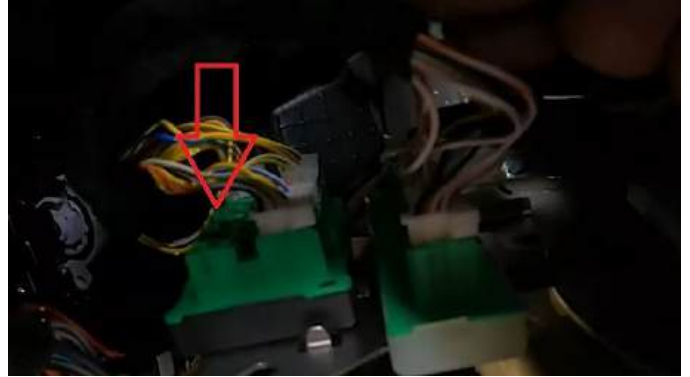
Note: Circled red goes to Rear Park Assist Module's left connector & circled green goes to star port.



Step 21: Connect Circled red to Rear Park Assist Module.



Step 22: Take the circled green connector and plug it into one of the star ports on the far left of the two star ports above the driver's left foot.



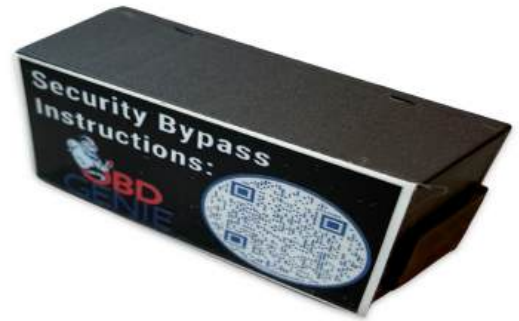
Step 23: Zip tie harness out of the way so it doesn't interfere with pedals.



Step 24: Reinstall trip panels for the fit and finish look. Now proceed with genie programming steps below.



Step 25: Install the Security Gateway Module Bypass in the appropriate place. Then proceed with genie programming. This step is only needed for 2018+ vehicles. To find your vehicle's bypass location click the link: [OBD Genie Bypass](#)



Step 26: Use the genie to program the vehicle for the new upgrade.

I. Put vehicle into the run position.

II. Wait 1 minute after putting the vehicle into run to plug in the genie programmer.

III. The genie once plugged in will flash blue as it tries to program.

IV. The genie will turn a solid green light once programming was completed successfully, programming can take 1-3 minutes long.

V. Remove the genie and give the vehicle a sleep cycle.

VI. Test out your new upgrade.

VII. Enjoy!



Step 27: Enjoy your purchase and again thank you for choosing Infotainment.com for your upgrades.



Things To Know

- After installing the ParkSense Rear Park Assist on your Ram, there may be a parasitic battery draw. This can be resolved by adjusting Fuse F54 in the internal fuse box. For detailed steps, [CLICK HERE](#).
- The volume at which the park assist feature chimes can be controlled through the factory radio settings menu. Low / Medium / High.
- If ordering a kit for the 2019+ Ram 1500 DT please note that the included rear bumper valances are designed for trucks equipped with factory installed dual exhaust. If your Ram 1500 does not feature dual exhaust, it will be required for the customer to order the left valance 68404393AB and the right valance 68404392AB from their local Ram dealer.

Return Policy/Warranty Terms

Infotainment.com 30-Day Return Policy:

Infotainment.com offers hassle free returns within 30 days from the date-of-delivery for a full refund unless otherwise stated on the product advertisement (such as a custom or special order item). The customer may choose to cancel their order prior to shipping or fulfillment without penalty. If the customer's order or package sustained physical damage it must be reported to Infotainment.com within 7 days of arrival. A 15% restock fee will apply to all returns unless the returned item(s) have been deemed defective by Infotainment.com after full inspection, in this case a restocking fee will not be assessed.

To initiate a return, the customer is required to contact the customer service department by phone, live chat, or via the online ticket system at anytime within 30 days from the date-of-delivery. The representative will issue a Return Merchandise Authorization (RMA) number, which is required to process your return. A copy of a completed RMA form must be included with the return shipment to expedite the process. The return must be shipped within 7 days of the RMA issuance. Infotainment.com reserves the right to refuse any package returned to them without authorization or process could be delayed over 30 days.

Customers are responsible for all return shipping charges unless they receive the wrong product or a defective item. It is recommended that the customer utilizes signature confirmation and/or insurance when shipping an item to Infotainment.com.

Infotainment.com will not be responsible for lost or damaged packages. Only the signature of an Infotainment.com employee will suffice as proof of delivery. A pre-paid return shipping label may be requested by the customer (located within the continental U.S) at the cost of \$15.00 to be deducted from the total refund amount. Customers located outside the United States will be responsible for all incurred shipping charges and customs duty/tax fees to or from Infotainment.com.

Returns will be processed within ten (10) business days of receipt (not including weekends, holidays, and the day the package is delivered). Refunds will be issued back to the original form of payment. If the original form of payment is no longer valid the refund will be issued as store credit. Infotainment.com reserves the right to reject or impose additional charges for replacement of a return if there is damage, missing



DISCOVER YOUR VEHICLE'S POTENTIAL

components, excessive use/wear, a different serial number from when originally shipped, etc. If the customer's return has not been processed within 3 weeks of arrival the customer is advised to contact the customer service department for an update. This return policy is null & void if product(s) have been tampered with or modified. Infotainment.com is not responsible for professional fees related to installation, removal or re-installation of any product. Infotainment.com reserves the right to change or amend the return policy and procedures at any time without notification.

Infotainment.com Retail 90-Day Warranty Policy:

Infotainment.com offers hassle free technical support and warranty claims on all products within 90 days from the date-of-delivery. Physical damage to an item received must be reported within 7 days of arrival.

To initiate a warranty claim, the customer is required to contact the customer service department by phone, live chat, or via the online ticket system at anytime within 90 days from the date-of-delivery. The representative will assist the customer with technical support and step-by-step troubleshooting procedures to resolve any issue or concern. If it is determined that the product(s) must be sent back for repair or exchange the representative will issue a Return Merchandise Authorization (RMA) number, which is required to process the warranty claim. A copy of a completed RMA form must be included with the return shipment to expedite the process. The item(s) must be shipped within 7 days of the RMA issuance. Infotainment.com reserves the right to refuse any package returned to them without authorization or process could be delayed over 30 days.

A pre-paid return shipping label will be issued by the customer service representative for customers located within the continental U.S. only. Customers located outside the U.S. will be responsible for all incurred shipping charges and customs duty/tax fees to or from Infotainment.com. Customers are fully responsible to ensure the item(s) are packaged securely to prevent damage in shipping transit. Infotainment.com will not be responsible for damaged item(s) due to poor packaging.

Warranty claims will be processed within five (5) business days of receipt (not including weekends, holidays, and the day the package is delivered). An Infotainment.com technician reserves the right to determine whether the troubled product requires a simple repair or a full replacement. Once the issue is resolved, a tracking number will be immediately provided to the customer when the repaired or replacement item is shipped



DISCOVER YOUR VEHICLE'S POTENTIAL

therefore ending the warranty claim. Infotainment.com reserves the right to reject or impose additional charges for warranty claims if there is damage, missing components, excessive use/wear, a different serial number from when originally shipped, etc. Infotainment.com will allow up to two (2) claims per order before it is determined the item(s) will not work in the customer's vehicle. If the customer's warranty claim has not been processed within 3 weeks of arrival the customer is advised to contact the customer service department for an update.

This warranty policy is null & void if product(s) have been tampered with or modified. Infotainment.com is not responsible for professional fees related to installation, removal or re-installation of any product. Infotainment.com reserves the right to change or amend the warranty policy and procedures at any time without notification.

Infotainment.com Extended 1-Year Warranty Policy:

Infotainment.com offers hassle free technical support and warranty claims on all products within 1 year from the date-of-delivery to retail customers who opt for the extended warranty coverage upon checkout. This policy also applies to all registered Infotainment.com wholesale accounts. Furthermore, franchise automobile dealers are granted additional coverage for their customers to match the vehicle's 3 year / 36,000 mile bumper-to-bumper manufacturer's warranty.

To initiate a warranty claim, the customer is required to contact the customer service department by phone, live chat, or via the online ticket system at anytime within 1 year from the date-of-delivery. The representative will assist the customer with technical support and step-by-step troubleshooting procedures to resolve any issue or concern. If it is determined that the product(s) must be sent back for repair or exchange the representative will issue a Return Merchandise Authorization (RMA) number, which is required to process the warranty claim. A copy of a completed RMA form must be included with the return shipment to expedite the process. The item(s) must be shipped within 7 days of the RMA issuance. Infotainment.com reserves the right to refuse any package returned to them without authorization or process could be delayed over 30 days.

A pre-paid return shipping label will be issued by the customer service representative for customers located within the continental U.S. only. Customers located outside the U.S. will be responsible for all incurred shipping charges and customs duty/tax fees to or from Infotainment.com. Customers are fully responsible to ensure the item(s) are



DISCOVER YOUR VEHICLE'S POTENTIAL

packaged securely to prevent damage in shipping transit. Infotainment.com will not be responsible for damaged item(s) due to poor packaging.

Warranty claims will be processed within five (5) business days of receipt (not including weekends, holidays, and the day the package is delivered). An Infotainment.com technician reserves the right to determine whether the troubled product requires a simple repair or a full replacement. Once the issue is resolved, a tracking number will be immediately provided to the customer when the repaired or replacement item is shipped therefore ending the warranty claim. Infotainment.com reserves the right to reject or impose additional charges for warranty claims if there is damage, missing components, excessive use/wear, a different serial number from when originally shipped, etc. Infotainment.com will allow up to two (2) claims per order before it is determined the item(s) will not work in the customer's vehicle. If the customer's warranty claim has not been processed within 3 weeks of arrival the customer is advised to contact the customer service department for an update.

This warranty policy is null & void if product(s) have been tampered with or modified. Infotainment.com is not responsible for professional fees related to installation, removal or re-installation of any product. Infotainment.com reserves the right to change or amend the warranty policy and procedures at any time without notification.