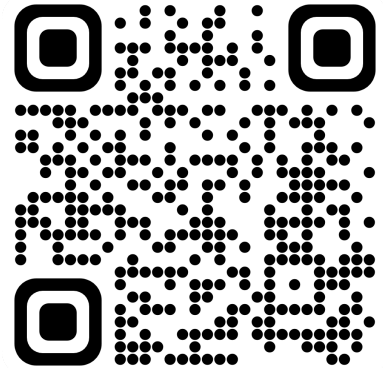


Install guide for (2019-2023 Ram 1500 DT Truck OEM Factory LED Headlight Upgrade Kit)

Before you begin, make sure to checkout our install video. We spend a good amount of time getting these videos just right so that they will be a helpful guide.

Part lists

- OEM LED Headlight (Passenger)
- OEM LED Headlight (Driver)
- Custom Headlight Wiring Harness



Tools required for installation, socket sizes & whatnot.

- Light Source
- Pry Tool
- Flathead Screwdriver
- 8mm Wrench/Socket
- 10mm Wrench/Socket

Skill Level: 3

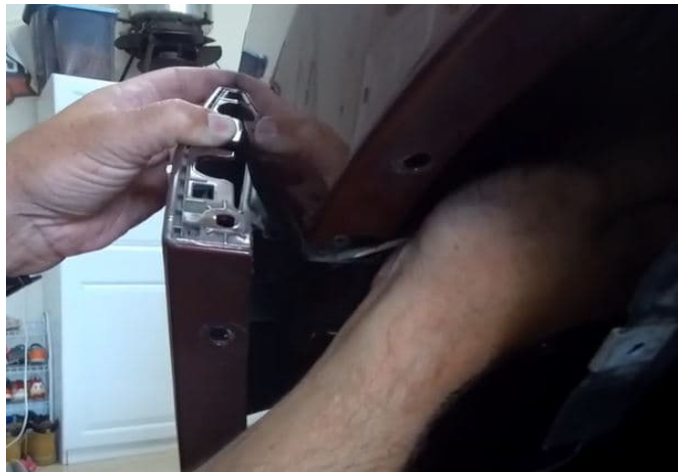
Time Investment: 2-3 hours



Step 1: Remove the negative terminal on the battery then starting on the driver side. Remove the four 8mm screws and the one plastic clip to give you the ability to pull the fender lining down out of your way.



Step 2: Remove the 8mm screw from above the fender lining then using a flathead screwdriver, push the black plastic down in order to release the clip.



Step 3: The rest of the painted trim panel under the headlight is held in with clips. Take your time and use your flathead screwdriver to free the clips. Place panel off to the side.



Step 4: Repeat the process on the passenger side.



Step 5: Next open the hood and start to remove the twelve plastic push pins holding the panel above the grill. Place panel off to the side.



Step 6: Now we have twelve 10mm screws to remove and two plastic push pins. After which you can remove the upper grill and place it off to the side.



Step 7: Next we will remove the actual grill. There are four 10mm screws to remove from the top and three 10mm screws to remove per side of the grill. Remove grill and place it off to the side.

Note: Two of the three screws you remove from each side of the grill are difference lengths, make note of which screw goes where.



Step 8: Both headlights are now only held in with two 10mm screws and one plastic push pin. Once removed the headlight is only connected by the factory wiring. Repeat this process on passenger side.



Step 9: There are two connectors per factory headlight, carefully slide the headlight out and disconnect those two connections. Push in the locking tab for the connection to release. Repeat this process on passenger side.



Step 10: Time to install the custom wiring harness. Start by zip tying the module to the rear of support.



Step 11: The larger of the two factory connectors that were attached to the headlight plug into our headlight harness. You should put some of the included grease to help seal the connection from water.



Step 12: The smaller of the two factory connectors that were attached to the headlight is not used anymore. You can tuck it away.



Step 13: Taking the other half of your wiring harness, the loom portion's smaller side should be plugged into the driver side gray connector on our harness.



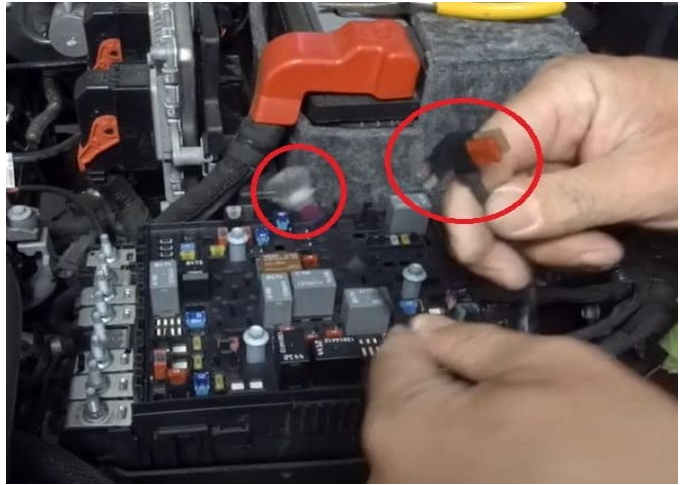
Step 14: The longer side of the loom needs to be ran to the passenger side headlight. There is no right way to route the loom, just stay away from anything hot or moving is a good rule of thumb.



Step 15: Install the custom wiring harness on passenger side. Start by zip tying the module to the rear of support same as you did on driver side. Then plug in the gray connector to the loom you just ran over to the passenger side.



Step 16: Next we need to wire up the ground and power connections to the fuse box.



Step 17: You will need to remove F35 fuse and place it in the open fuse spot on our harness. Then plug in our harness into the open slot on F35.

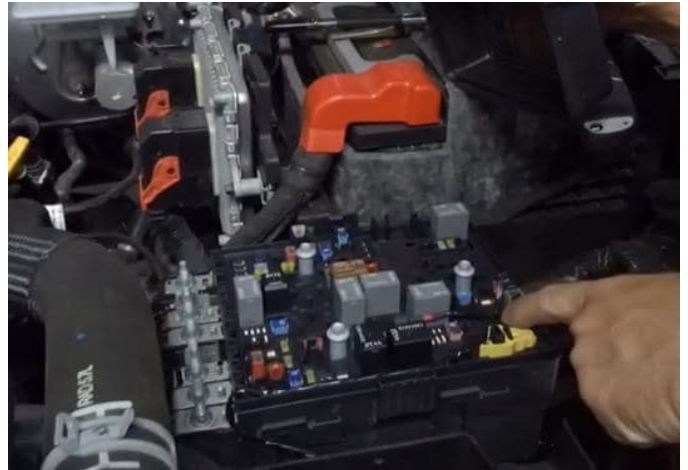
Note: Forgetting to install the fuse in our harness that you removed from the fuse box will result in the vehicle not starting.



Step 18: Next find an open ground slot on the side of the fuse box. Remove the 10mm nut, slide the ground loop from our harness on to the bolt then secure in place with the 10mm nut.



Step 19: Route the harness along the side of the fuse box to prevent any pinching of the wire.



Step 20: Time to install the new LED headlights. You will be plugging in one connection from our harness into the headlight. Secure in place with the two 10mm screws and one plastic push pin you removed earlier.



Step 21: Reconnect the negative terminal on the battery and test the headlight functions. If all is working then start putting the vehicle back together.



Step 22: Once you reassembled the vehicle, take a look at your upgrade!



Step 23: Enjoy your purchase and again thank you for choosing Infotainment.com for your upgrades.



Return Policy/Warranty Terms

Infotainment.com 30-Day Return Policy:

Infotainment.com offers hassle free returns within 30 days from the date-of-delivery for a full refund unless otherwise stated on the product advertisement (such as a custom or special order item). The customer may choose to cancel their order prior to shipping or fulfillment without penalty. If the customer's order or package sustained physical damage it must be reported to Infotainment.com within 7 days of arrival. A 15% restock fee will apply to all returns unless the returned item(s) have been deemed defective by Infotainment.com after full inspection, in this case a restocking fee will not be assessed.

To initiate a return, the customer is required to contact the customer service department by phone, live chat, or via the online ticket system at anytime within 30 days from the date-of-delivery. The representative will issue a Return Merchandise Authorization (RMA) number, which is required to process your return. A copy of a completed RMA form must be included with the return shipment to expedite the process. The return must be shipped within 7 days of the RMA issuance. Infotainment.com reserves the right to refuse any package returned to them without authorization or process could be delayed over 30 days.

Customers are responsible for all return shipping charges unless they receive the wrong product or a defective item. It is recommended that the customer utilizes signature confirmation and/or insurance when shipping an item to Infotainment.com.

Infotainment.com will not be responsible for lost or damaged packages. Only the signature of an Infotainment.com employee will suffice as proof of delivery. A pre-paid return shipping label may be requested by the customer (located within the continental U.S) at the cost of \$15.00 to be deducted from the total refund amount. Customers located outside the United States will be responsible for all incurred shipping charges and customs duty/tax fees to or from Infotainment.com.

Returns will be processed within ten (10) business days of receipt (not including weekends, holidays, and the day the package is delivered). Refunds will be issued back to the original form of payment. If the original form of payment is no longer valid the refund will be issued as store credit. Infotainment.com reserves the right to reject or impose additional charges for replacement of a return if there is damage, missing



DISCOVER YOUR VEHICLE'S POTENTIAL

components, excessive use/wear, a different serial number from when originally shipped, etc. If the customer's return has not been processed within 3 weeks of arrival the customer is advised to contact the customer service department for an update. This return policy is null & void if product(s) have been tampered with or modified. Infotainment.com is not responsible for professional fees related to installation, removal or re-installation of any product. Infotainment.com reserves the right to change or amend the return policy and procedures at any time without notification.

Infotainment.com Retail 90-Day Warranty Policy:

Infotainment.com offers hassle free technical support and warranty claims on all products within 90 days from the date-of-delivery. Physical damage to an item received must be reported within 7 days of arrival.

To initiate a warranty claim, the customer is required to contact the customer service department by phone, live chat, or via the online ticket system at anytime within 90 days from the date-of-delivery. The representative will assist the customer with technical support and step-by-step troubleshooting procedures to resolve any issue or concern. If it is determined that the product(s) must be sent back for repair or exchange the representative will issue a Return Merchandise Authorization (RMA) number, which is required to process the warranty claim. A copy of a completed RMA form must be included with the return shipment to expedite the process. The item(s) must be shipped within 7 days of the RMA issuance. Infotainment.com reserves the right to refuse any package returned to them without authorization or process could be delayed over 30 days.

A pre-paid return shipping label will be issued by the customer service representative for customers located within the continental U.S. only. Customers located outside the U.S. will be responsible for all incurred shipping charges and customs duty/tax fees to or from Infotainment.com. Customers are fully responsible to ensure the item(s) are packaged securely to prevent damage in shipping transit. Infotainment.com will not be responsible for damaged item(s) due to poor packaging.

Warranty claims will be processed within five (5) business days of receipt (not including weekends, holidays, and the day the package is delivered). An Infotainment.com technician reserves the right to determine whether the troubled product requires a simple repair or a full replacement. Once the issue is resolved, a tracking number will be immediately provided to the customer when the repaired or replacement item is shipped



DISCOVER YOUR VEHICLE'S POTENTIAL

therefore ending the warranty claim. Infotainment.com reserves the right to reject or impose additional charges for warranty claims if there is damage, missing components, excessive use/wear, a different serial number from when originally shipped, etc. Infotainment.com will allow up to two (2) claims per order before it is determined the item(s) will not work in the customer's vehicle. If the customer's warranty claim has not been processed within 3 weeks of arrival the customer is advised to contact the customer service department for an update.

This warranty policy is null & void if product(s) have been tampered with or modified. Infotainment.com is not responsible for professional fees related to installation, removal or re-installation of any product. Infotainment.com reserves the right to change or amend the warranty policy and procedures at any time without notification.

Infotainment.com Extended 1-Year Warranty Policy:

Infotainment.com offers hassle free technical support and warranty claims on all products within 1 year from the date-of-delivery to retail customers who opt for the extended warranty coverage upon checkout. This policy also applies to all registered Infotainment.com wholesale accounts. Furthermore, franchise automobile dealers are granted additional coverage for their customers to match the vehicle's 3 year / 36,000 mile bumper-to-bumper manufacturer's warranty.

To initiate a warranty claim, the customer is required to contact the customer service department by phone, live chat, or via the online ticket system at anytime within 1 year from the date-of-delivery. The representative will assist the customer with technical support and step-by-step troubleshooting procedures to resolve any issue or concern. If it is determined that the product(s) must be sent back for repair or exchange the representative will issue a Return Merchandise Authorization (RMA) number, which is required to process the warranty claim. A copy of a completed RMA form must be included with the return shipment to expedite the process. The item(s) must be shipped within 7 days of the RMA issuance. Infotainment.com reserves the right to refuse any package returned to them without authorization or process could be delayed over 30 days.

A pre-paid return shipping label will be issued by the customer service representative for customers located within the continental U.S. only. Customers located outside the U.S. will be responsible for all incurred shipping charges and customs duty/tax fees to or from Infotainment.com. Customers are fully responsible to ensure the item(s) are



DISCOVER YOUR VEHICLE'S POTENTIAL

packaged securely to prevent damage in shipping transit. Infotainment.com will not be responsible for damaged item(s) due to poor packaging.

Warranty claims will be processed within five (5) business days of receipt (not including weekends, holidays, and the day the package is delivered). An Infotainment.com technician reserves the right to determine whether the troubled product requires a simple repair or a full replacement. Once the issue is resolved, a tracking number will be immediately provided to the customer when the repaired or replacement item is shipped therefore ending the warranty claim. Infotainment.com reserves the right to reject or impose additional charges for warranty claims if there is damage, missing components, excessive use/wear, a different serial number from when originally shipped, etc. Infotainment.com will allow up to two (2) claims per order before it is determined the item(s) will not work in the customer's vehicle. If the customer's warranty claim has not been processed within 3 weeks of arrival the customer is advised to contact the customer service department for an update.

This warranty policy is null & void if product(s) have been tampered with or modified. Infotainment.com is not responsible for professional fees related to installation, removal or re-installation of any product. Infotainment.com reserves the right to change or amend the warranty policy and procedures at any time without notification.