

Install guide for (2019-2023 Chevrolet Silverado and GMC Sierra Kicker Subwoofer Audio Upgrade)

Before you begin, make sure to checkout our install video. We spend a good amount of time getting these videos just right so that they will be a helpful guide.

Part lists

- Kicker Subwoofer with preinstalled Amp
- Interior Amp*
- Kicker Subwoofer Amp Harness
- Kicker Subwoofer Power Harness

*Not included with every kit (Bose/None Bose)



Tools required for installation, socket sizes & whatnot.

- Light Source
- Pry Tool
- Flathead Screwdriver
- Pick Tool
- 7mm, 10mm, 13mm, 18mm Wrench/Socket

Skill Level: 3

Time Investment: 2-3 hours



Things To Know

Note: This installation video includes the interior amplifier, for GMC & Chevrolet trucks that are **NOT** equipped with Bose audio systems. Trucks with an UQA option code will not need the interior amplifier, making the installation of the subwoofer even easier!

- For use in ALL Crew Cab or Extended Cab Models (IOR, IOS, IOT and UQA/BoseAudio Systems)
- NOT for use on Regular Cab Models
- NOT compatible with second-row under seat storage
- Two 25-amp micro fuses will need to be acquired for this upgrade.

Step 1: We start in the engine bay. Run a zip tie into the vehicle cab using this rubber grommet. You'll have to make a small cut into the rubber grommet to feed the power harness through.



Step 2: Back in the engine bay, tape the six pins to the end of the zip tie using electrical tape.

Note: Your power harness may have the connectors on the pins. We recommend de-pinning the connectors to make it easier to get through the rubber grommet.



Step 3: Pull the zip tie in the cab till the taped pins come through. Un-wrapped the pins from the zip tie.



Step 4: Take the two included connectors and plug in the six pins into the connectors. Three per connector; the order of the three pins do not matter.



Step 5: Back in the engine bay, take a moment to remove the two fuses from the Amp Power Harness so the power lines are not live with power while you are installing.



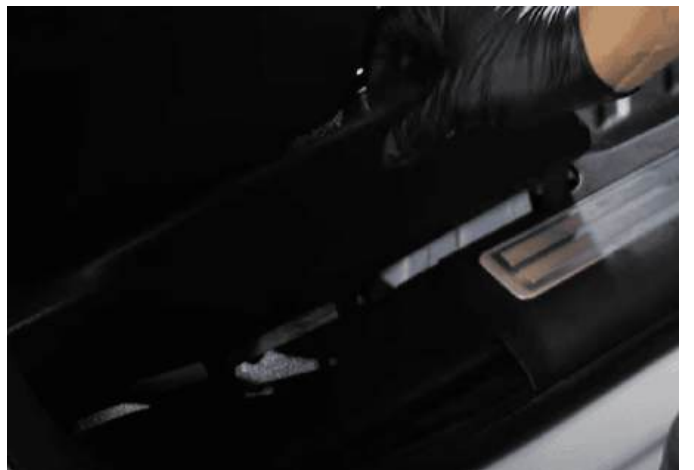
Step 6: Route the Amp Power Harness through the batter supports.



Step 7: The two power connectors will attach to the two 13mm nuts to power the system. Remove the two 13mm nuts and attach one power connector per attachment point. Re-cover the junction.



Step 8: Back in the cab, passenger side, remove the trim from the passenger seat.



Step 9: With that seat trim removed, you can pop up and back the passenger door well trim.



Step 10: Up behind the glove box is the radio module; we need to unplug the gray and green connectors.



Step 11: Take the gray connector and plug in the Amp Harness's gray passthrough. Plug in the other side back into the radio module.



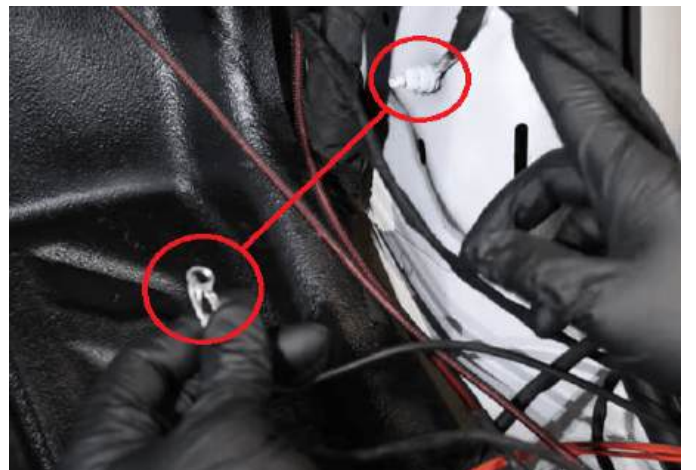
Step 12: For the green connector, we need to put a T-tap on the green wire with a black stripe. The t-tap is part of the amp harness. Cut the green wire with the black stripe, strip the ends, then crimp them to the T-tap in the kit. Once done, plug in the green connector back into the radio module.



Step 13: Plug in the two power connectors you pinned into the three pin connectors on the Amp Harness.



Step 14: There are two grounding loops we will attach to the factory ground location. Remove the 10mm nut, split on the two grounding loops, and reinstall the 10mm nut.



Step 15: Take a moment and zip tie the amp harness for a neat and clean finish.



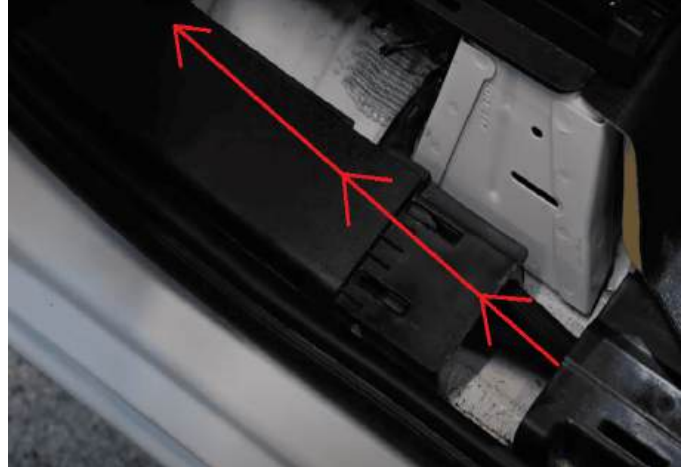
Step 16: Pull the flooring back and remove the four 7mm screws holding the factory harness cover.



Step 17: With the cover removed, you'll see the factory wiring. Put the Amp Harness along this path. Then install the factory wiring cover.



Step 18: Lift the trim panel up and feed the Amp Harness under the trim. Feed the remainder of the Amp Harness behind the passenger seat.



Step 19: Reinstall the trim panels.



Step 20: Move on to the rear compartment; pull the trim panel up.



Step 21: Lift the two corners of the trim pieces; this will let you get to the factory harness cover. Same we did on the front passenger side.



Step 22: Pull up on the flooring to remove the four 7mm screws to be able to remove the factory wiring cover.



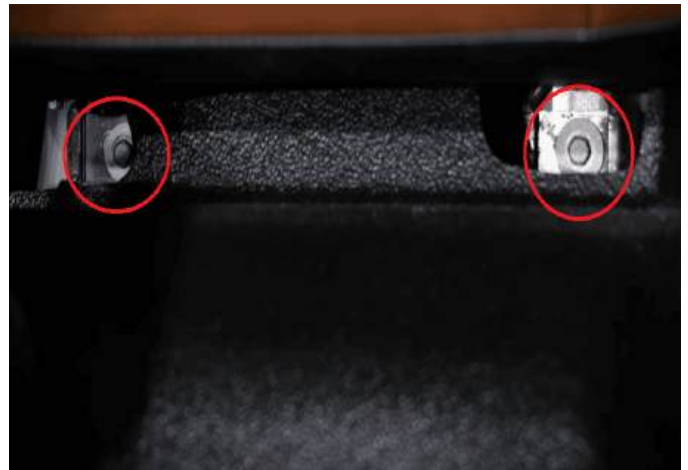
Step 23: With the cover removed, route the Amp Harness along side the factory harness. Once the Amp Harness is routed, reinstall the factory harness cover and trim pieces.



Step 24: Remove the factory jack; there are two 10mm nuts to remove to free the jack.



Step 25: Next, we need to remove four 10mm bolts from under the rear seat. Two in the center, one to the left and one to the right. Remove all four bolts.



Step 26: Next remove all three rear head rests. Angle the head rest down then depress the buttons along the rods and lift to free the head rests.



Step 27: Next, we need to remove the shafts that head rests sit in. Lift up while using a flathead screwdriver to release the clip to free the part. Remove all six from the



Step 28: There are three hooks holding the rear back seat in place. You'll need to hook the latch and lift to free the seat while pulling the seat forward.



Step 29: Once all three latches are done, remove the rear seat's back out of the vehicle.



Step 30: Lift the rear seat up and route the Amp Harness in under the flooring.



Step 31: If your kit came with an interior amp, then route the two amp plugs under and behind the rear seat.



Step 32: Plug in the interior amp and mount it to the rear cap wall using the included hardware, which is three 10mm nuts.



Step 33: Route the rest of the amp harness behind the rear seat, then feed the sub amp and sub connections to where the sub will install.



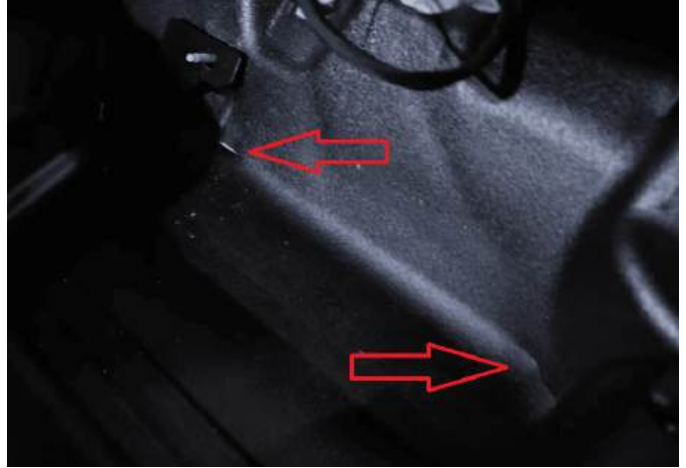
Step 34: We need to remove the jack tools as we need to mount the sub to this location.



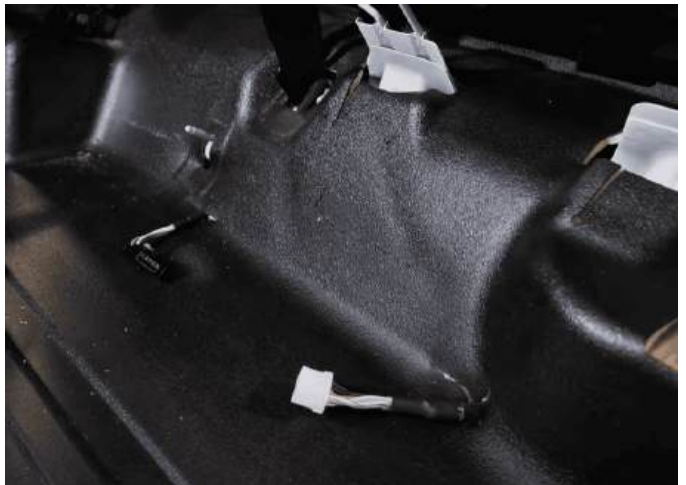
Step 35: Next, remove the 18mm bolt for the second sub mounting location.



Step 36: We need to place the sub in the vehicle to mark the locations we want to cut the flooring to make openings for the sub amp and the sub.



Step 37: Remove the sub, make your cuts to the flooring, and route the amp harness.



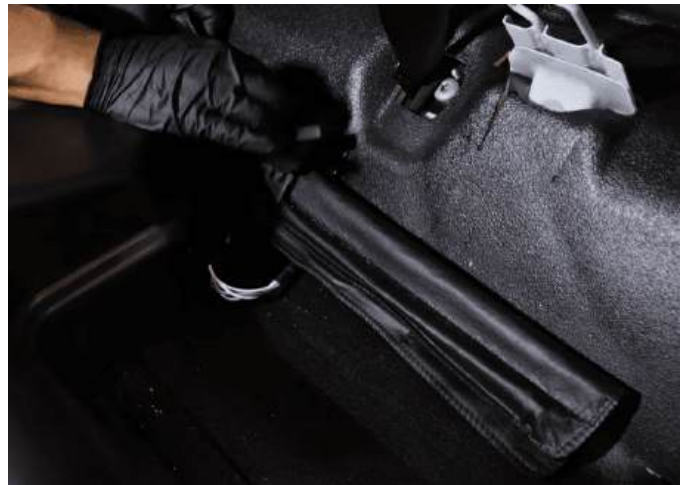
Step 38: Put the sub back into the vehicle and plug in the sub and sub amp.



Step 39: Reinstall the 18mm bolt back into place.



Step 40: Reinstall the jack tools.



Step 41: Time to reinstall everything we removed during installation. Take your time and don't pinch any of the newly ran cables.



Step 42: With everything back installed. Head to the engine bay and reinstall the two fuses into their receptacles, then put the cover back on.



Step 43: Start the vehicle and play something to hear the difference.



Step 44: Enjoy your purchase and again thank you for choosing Infotainment.com for your upgrades.



Return Policy/Warranty Terms

Infotainment.com 30-Day Return Policy:

Infotainment.com offers hassle free returns within 30 days from the date-of-delivery for a full refund unless otherwise stated on the product advertisement (such as a custom or special order item). The customer may choose to cancel their order prior to shipping or fulfillment without penalty. If the customer's order or package sustained physical damage it must be reported to Infotainment.com within 7 days of arrival. A 15% restock fee will apply to all returns unless the returned item(s) have been deemed defective by Infotainment.com after full inspection, in this case a restocking fee will not be assessed.

To initiate a return, the customer is required to contact the customer service department by phone, live chat, or via the online ticket system at anytime within 30 days from the date-of-delivery. The representative will issue a Return Merchandise Authorization (RMA) number, which is required to process your return. A copy of a completed RMA form must be included with the return shipment to expedite the process. The return must be shipped within 7 days of the RMA issuance. Infotainment.com reserves the right to refuse any package returned to them without authorization or process could be delayed over 30 days.

Customers are responsible for all return shipping charges unless they receive the wrong product or a defective item. It is recommended that the customer utilizes signature confirmation and/or insurance when shipping an item to Infotainment.com.

Infotainment.com will not be responsible for lost or damaged packages. Only the signature of an Infotainment.com employee will suffice as proof of delivery. A pre-paid return shipping label may be requested by the customer (located within the continental U.S) at the cost of \$15.00 to be deducted from the total refund amount. Customers located outside the United States will be responsible for all incurred shipping charges and customs duty/tax fees to or from Infotainment.com.

Returns will be processed within ten (10) business days of receipt (not including weekends, holidays, and the day the package is delivered). Refunds will be issued back to the original form of payment. If the original form of payment is no longer valid the refund will be issued as store credit. Infotainment.com reserves the right to reject or impose additional charges for replacement of a return if there is damage, missing



DISCOVER YOUR VEHICLE'S POTENTIAL

components, excessive use/wear, a different serial number from when originally shipped, etc. If the customer's return has not been processed within 3 weeks of arrival the customer is advised to contact the customer service department for an update. This return policy is null & void if product(s) have been tampered with or modified. Infotainment.com is not responsible for professional fees related to installation, removal or re-installation of any product. Infotainment.com reserves the right to change or amend the return policy and procedures at any time without notification.

Infotainment.com Retail 90-Day Warranty Policy:

Infotainment.com offers hassle free technical support and warranty claims on all products within 90 days from the date-of-delivery. Physical damage to an item received must be reported within 7 days of arrival.

To initiate a warranty claim, the customer is required to contact the customer service department by phone, live chat, or via the online ticket system at anytime within 90 days from the date-of-delivery. The representative will assist the customer with technical support and step-by-step troubleshooting procedures to resolve any issue or concern. If it is determined that the product(s) must be sent back for repair or exchange the representative will issue a Return Merchandise Authorization (RMA) number, which is required to process the warranty claim. A copy of a completed RMA form must be included with the return shipment to expedite the process. The item(s) must be shipped within 7 days of the RMA issuance. Infotainment.com reserves the right to refuse any package returned to them without authorization or process could be delayed over 30 days.

A pre-paid return shipping label will be issued by the customer service representative for customers located within the continental U.S. only. Customers located outside the U.S. will be responsible for all incurred shipping charges and customs duty/tax fees to or from Infotainment.com. Customers are fully responsible to ensure the item(s) are packaged securely to prevent damage in shipping transit. Infotainment.com will not be responsible for damaged item(s) due to poor packaging.

Warranty claims will be processed within five (5) business days of receipt (not including weekends, holidays, and the day the package is delivered). An Infotainment.com technician reserves the right to determine whether the troubled product requires a simple repair or a full replacement. Once the issue is resolved, a tracking number will be immediately provided to the customer when the repaired or replacement item is shipped



DISCOVER YOUR VEHICLE'S POTENTIAL

therefore ending the warranty claim. Infotainment.com reserves the right to reject or impose additional charges for warranty claims if there is damage, missing components, excessive use/wear, a different serial number from when originally shipped, etc. Infotainment.com will allow up to two (2) claims per order before it is determined the item(s) will not work in the customer's vehicle. If the customer's warranty claim has not been processed within 3 weeks of arrival the customer is advised to contact the customer service department for an update.

This warranty policy is null & void if product(s) have been tampered with or modified. Infotainment.com is not responsible for professional fees related to installation, removal or re-installation of any product. Infotainment.com reserves the right to change or amend the warranty policy and procedures at any time without notification.

Infotainment.com Extended 1-Year Warranty Policy:

Infotainment.com offers hassle free technical support and warranty claims on all products within 1 year from the date-of-delivery to retail customers who opt for the extended warranty coverage upon checkout. This policy also applies to all registered Infotainment.com wholesale accounts. Furthermore, franchise automobile dealers are granted additional coverage for their customers to match the vehicle's 3 year / 36,000 mile bumper-to-bumper manufacturer's warranty.

To initiate a warranty claim, the customer is required to contact the customer service department by phone, live chat, or via the online ticket system at anytime within 1 year from the date-of-delivery. The representative will assist the customer with technical support and step-by-step troubleshooting procedures to resolve any issue or concern. If it is determined that the product(s) must be sent back for repair or exchange the representative will issue a Return Merchandise Authorization (RMA) number, which is required to process the warranty claim. A copy of a completed RMA form must be included with the return shipment to expedite the process. The item(s) must be shipped within 7 days of the RMA issuance. Infotainment.com reserves the right to refuse any package returned to them without authorization or process could be delayed over 30 days.

A pre-paid return shipping label will be issued by the customer service representative for customers located within the continental U.S. only. Customers located outside the U.S. will be responsible for all incurred shipping charges and customs duty/tax fees to or from Infotainment.com. Customers are fully responsible to ensure the item(s) are



DISCOVER YOUR VEHICLE'S POTENTIAL

packaged securely to prevent damage in shipping transit. Infotainment.com will not be responsible for damaged item(s) due to poor packaging.

Warranty claims will be processed within five (5) business days of receipt (not including weekends, holidays, and the day the package is delivered). An Infotainment.com technician reserves the right to determine whether the troubled product requires a simple repair or a full replacement. Once the issue is resolved, a tracking number will be immediately provided to the customer when the repaired or replacement item is shipped therefore ending the warranty claim. Infotainment.com reserves the right to reject or impose additional charges for warranty claims if there is damage, missing components, excessive use/wear, a different serial number from when originally shipped, etc. Infotainment.com will allow up to two (2) claims per order before it is determined the item(s) will not work in the customer's vehicle. If the customer's warranty claim has not been processed within 3 weeks of arrival the customer is advised to contact the customer service department for an update.

This warranty policy is null & void if product(s) have been tampered with or modified. Infotainment.com is not responsible for professional fees related to installation, removal or re-installation of any product. Infotainment.com reserves the right to change or amend the warranty policy and procedures at any time without notification.