

Install guide for (2013-2018, 2019-2022 Ram 1500 Classic - Integrated Electronic TBC).

Before you begin, make sure to checkout our install video. We spend a good amount of time getting these videos just right so that they will be a helpful guide.

Part lists

- TBC Module
- TBC Bracket
- TBC Switch
- 3 Screws
- Genie Programmer
- Security Gateway Module Bypass
- Plastic Screw Inserts (optional)*



*Not included with kit.

Tools required for installation, socket sizes & whatnot.

- Pry Tools
- Light Source
- Philip Screwdriver
- 9/32 Drill Bit (optional)
- 7mm Wrench/Socket

Skill Level: 1

Time Investment: 1 hour

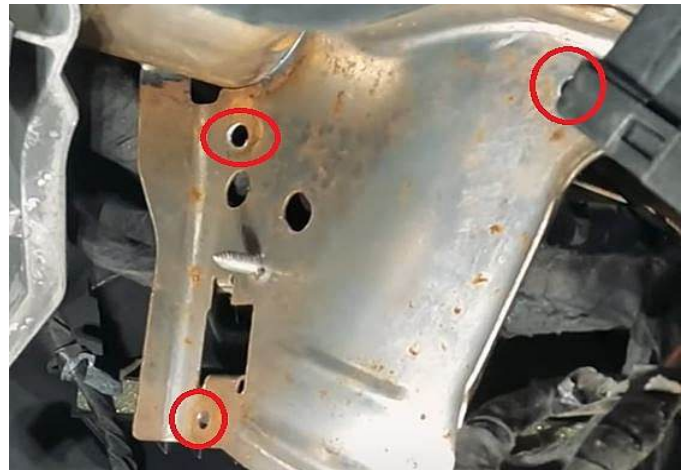


Step 1: Remove knee bolster on driver's side. There are two 10mm screws holding the bottom of the knee bolster in place. The rest of the knee bolster is held in with retainer clips. Pull toward the rear of the vehicle to uninstall.



Step 2: Looking up under the steering wheel, you'll see the OEM spot for the TBC module.

Note: There are three holes to mount the TBC bracket into place.



Step 3: You can see the TBC bracket fits into place.

Note: You can install the three provided screws going from the rear of the bracket or follow our solution next.



Step 4: We used small Plastic Screw Inserts to reverse the direction of the three screws to mount the TBC bracket into place.

Note: Plastic Screw Inserts not included in kit.



Step 5: Use a 9/32 Drill Bit to widen the opening of the three holes to use the Plastic Screw Inserts.



Step 6: With the holes widened you can insert the three Plastic Screw Inserts.



Step 7: You can start screwing the three screws into the TBC bracket, just enough to hold on to the screws for you.



Step 8: Find your two TBC module connections, they should be close to the TBC bracket mount location. Probably tired up and pushed out of the way.

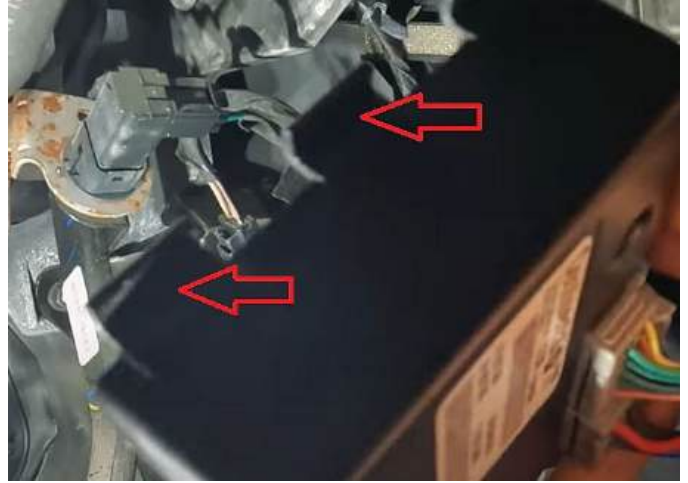


Step 9: Connect the TBC module to the TBC module OEM connections.

Note: They are keyed so they can only plug in one way.



Step 10: To install the TBC module, there are three tabs at the top that only the two left tabs slide into place



Step 11: Slide the TBC module into place at an angle.



Step 12: Push the bottom of the TBC module till you hear the locking tab snap into place.



Step 13: Snap knee bolster back into place with its retainer clips.

Note: You may need to give the knee bolster a firm smack to get the retainer clips to lock into place.



Step 14: Reinstall the two 10mm screws at the bottom of the knee bolster.



Step 15: Time to install the TBC switch, start by removing the rubber tray covering the two 7mm screws.



Step 16: Remove the two 7mm screws.

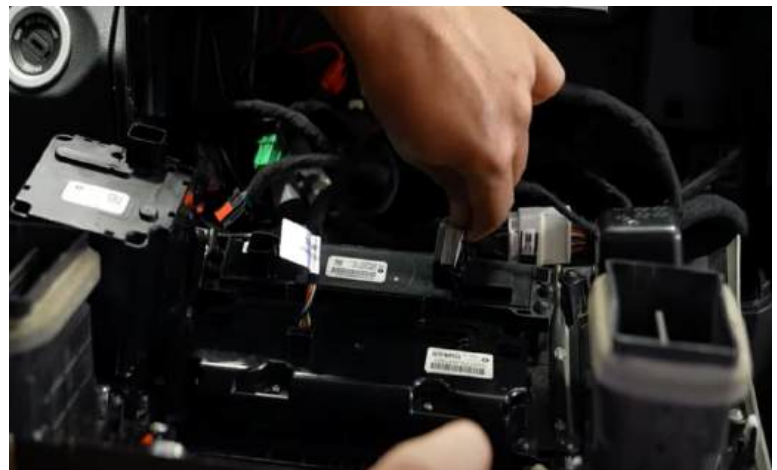


Step 17: Pull the bezel toward you, it takes some force.

Note: The bezel is only held in by retainer clips.



Step 18: Disconnect all connections to the bezel and flip it around.



Step 19: There are four screws holding the controls in place.



Step 20: There are two clips top and bottom to release the controls.



Step 21: Remove the plastic TBC insert that held the TBC spot.



Step 22: Install the new TBC switch into place, it will snap into place.



Step 23: Nap controls back into place and reinstall the four screws.



Step 24: Reconnect all bezel connections and connect the new TBC switch to the factory TBC harness.



Step 25: Push the bezel back into place, you'll hear the retainer clips lock into place.



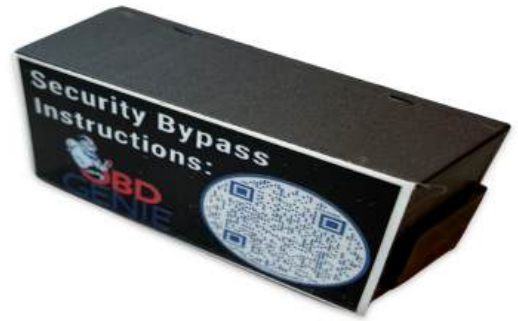
Step 26: Reinstall the two 7mm screws.



Step 27: Put your rubber tray cover back into place & Enjoy the upgrade!



Step 28: Install the Security Gateway Module Bypass in the appropriate place. Then proceed with genie programming. This step is only needed for 2018+ vehicles. To find your vehicle's bypass location click the link: [OBD Genie Bypass](#)



Step 29: Use the genie to program the vehicle for the new upgrade.

I. Put vehicle into the run position.

II. Wait 1 minute after putting the vehicle into run to plug in the genie programmer.

III. The genie once plugged in will flash blue as it tries to program.

IV. The genie will turn a solid green light once programming was completed successfully, programming can take 1-3 minutes long.

V. Remove the genie and give the vehicle a sleep cycle.

VI. Test out your new upgrade.

VII. Enjoy!



Step 30: Enjoy your purchase and again thank you for choosing Infotainment.com for your upgrades.



Return Policy/Warranty Terms

Infotainment.com 30-Day Return Policy:

Infotainment.com offers hassle free returns within 30 days from the date-of-delivery for a full refund unless otherwise stated on the product advertisement (such as a custom or special order item). The customer may choose to cancel their order prior to shipping or fulfillment without penalty. If the customer's order or package sustained physical damage it must be reported to Infotainment.com within 7 days of arrival. A 15% restock fee will apply to all returns unless the returned item(s) have been deemed defective by Infotainment.com after full inspection, in this case a restocking fee will not be assessed.

To initiate a return, the customer is required to contact the customer service department by phone, live chat, or via the online ticket system at anytime within 30 days from the date-of-delivery. The representative will issue a Return Merchandise Authorization (RMA) number, which is required to process your return. A copy of a completed RMA form must be included with the return shipment to expedite the process. The return must be shipped within 7 days of the RMA issuance. Infotainment.com reserves the right to refuse any package returned to them without authorization or process could be delayed over 30 days.

Customers are responsible for all return shipping charges unless they receive the wrong product or a defective item. It is recommended that the customer utilizes signature confirmation and/or insurance when shipping an item to Infotainment.com.

Infotainment.com will not be responsible for lost or damaged packages. Only the signature of an Infotainment.com employee will suffice as proof of delivery. A pre-paid return shipping label may be requested by the customer (located within the continental U.S) at the cost of \$15.00 to be deducted from the total refund amount. Customers located outside the United States will be responsible for all incurred shipping charges and customs duty/tax fees to or from Infotainment.com.

Returns will be processed within ten (10) business days of receipt (not including weekends, holidays, and the day the package is delivered). Refunds will be issued back to the original form of payment. If the original form of payment is no longer valid the refund will be issued as store credit. Infotainment.com reserves the right to reject or impose additional charges for replacement of a return if there is damage, missing



DISCOVER YOUR VEHICLE'S POTENTIAL

components, excessive use/wear, a different serial number from when originally shipped, etc. If the customer's return has not been processed within 3 weeks of arrival the customer is advised to contact the customer service department for an update. This return policy is null & void if product(s) have been tampered with or modified. Infotainment.com is not responsible for professional fees related to installation, removal or re-installation of any product. Infotainment.com reserves the right to change or amend the return policy and procedures at any time without notification.

Infotainment.com Retail 90-Day Warranty Policy:

Infotainment.com offers hassle free technical support and warranty claims on all products within 90 days from the date-of-delivery. Physical damage to an item received must be reported within 7 days of arrival.

To initiate a warranty claim, the customer is required to contact the customer service department by phone, live chat, or via the online ticket system at anytime within 90 days from the date-of-delivery. The representative will assist the customer with technical support and step-by-step troubleshooting procedures to resolve any issue or concern. If it is determined that the product(s) must be sent back for repair or exchange the representative will issue a Return Merchandise Authorization (RMA) number, which is required to process the warranty claim. A copy of a completed RMA form must be included with the return shipment to expedite the process. The item(s) must be shipped within 7 days of the RMA issuance. Infotainment.com reserves the right to refuse any package returned to them without authorization or process could be delayed over 30 days.

A pre-paid return shipping label will be issued by the customer service representative for customers located within the continental U.S. only. Customers located outside the U.S. will be responsible for all incurred shipping charges and customs duty/tax fees to or from Infotainment.com. Customers are fully responsible to ensure the item(s) are packaged securely to prevent damage in shipping transit. Infotainment.com will not be responsible for damaged item(s) due to poor packaging.

Warranty claims will be processed within five (5) business days of receipt (not including weekends, holidays, and the day the package is delivered). An Infotainment.com technician reserves the right to determine whether the troubled product requires a simple repair or a full replacement. Once the issue is resolved, a tracking number will be immediately provided to the customer when the repaired or replacement item is shipped



DISCOVER YOUR VEHICLE'S POTENTIAL

therefore ending the warranty claim. Infotainment.com reserves the right to reject or impose additional charges for warranty claims if there is damage, missing components, excessive use/wear, a different serial number from when originally shipped, etc. Infotainment.com will allow up to two (2) claims per order before it is determined the item(s) will not work in the customer's vehicle. If the customer's warranty claim has not been processed within 3 weeks of arrival the customer is advised to contact the customer service department for an update.

This warranty policy is null & void if product(s) have been tampered with or modified. Infotainment.com is not responsible for professional fees related to installation, removal or re-installation of any product. Infotainment.com reserves the right to change or amend the warranty policy and procedures at any time without notification.

Infotainment.com Extended 1-Year Warranty Policy:

Infotainment.com offers hassle free technical support and warranty claims on all products within 1 year from the date-of-delivery to retail customers who opt for the extended warranty coverage upon checkout. This policy also applies to all registered Infotainment.com wholesale accounts. Furthermore, franchise automobile dealers are granted additional coverage for their customers to match the vehicle's 3 year / 36,000 mile bumper-to-bumper manufacturer's warranty.

To initiate a warranty claim, the customer is required to contact the customer service department by phone, live chat, or via the online ticket system at anytime within 1 year from the date-of-delivery. The representative will assist the customer with technical support and step-by-step troubleshooting procedures to resolve any issue or concern. If it is determined that the product(s) must be sent back for repair or exchange the representative will issue a Return Merchandise Authorization (RMA) number, which is required to process the warranty claim. A copy of a completed RMA form must be included with the return shipment to expedite the process. The item(s) must be shipped within 7 days of the RMA issuance. Infotainment.com reserves the right to refuse any package returned to them without authorization or process could be delayed over 30 days.

A pre-paid return shipping label will be issued by the customer service representative for customers located within the continental U.S. only. Customers located outside the U.S. will be responsible for all incurred shipping charges and customs duty/tax fees to or from Infotainment.com. Customers are fully responsible to ensure the item(s) are



DISCOVER YOUR VEHICLE'S POTENTIAL

packaged securely to prevent damage in shipping transit. Infotainment.com will not be responsible for damaged item(s) due to poor packaging.

Warranty claims will be processed within five (5) business days of receipt (not including weekends, holidays, and the day the package is delivered). An Infotainment.com technician reserves the right to determine whether the troubled product requires a simple repair or a full replacement. Once the issue is resolved, a tracking number will be immediately provided to the customer when the repaired or replacement item is shipped therefore ending the warranty claim. Infotainment.com reserves the right to reject or impose additional charges for warranty claims if there is damage, missing components, excessive use/wear, a different serial number from when originally shipped, etc. Infotainment.com will allow up to two (2) claims per order before it is determined the item(s) will not work in the customer's vehicle. If the customer's warranty claim has not been processed within 3 weeks of arrival the customer is advised to contact the customer service department for an update.

This warranty policy is null & void if product(s) have been tampered with or modified. Infotainment.com is not responsible for professional fees related to installation, removal or re-installation of any product. Infotainment.com reserves the right to change or amend the warranty policy and procedures at any time without notification.